

LIFT-SAFE®



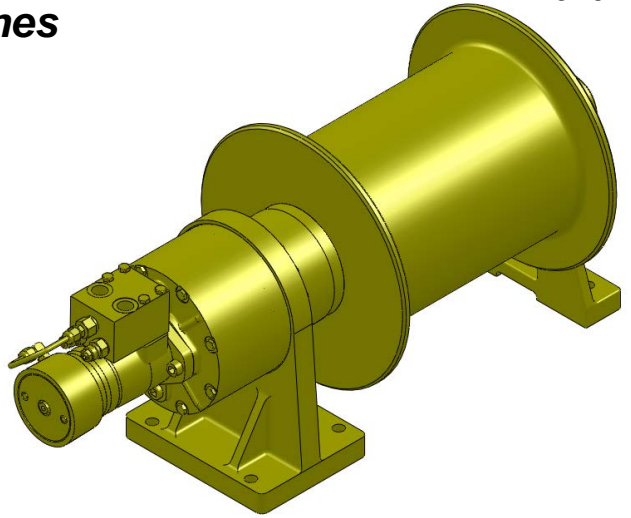
"Quality Since 1910"

Series LS21H

Hydraulic Planetary Cable Winches

Lift-Safe® hydraulic winches are specifically designed for lifting applications and optimum load control. Engineered for enhanced safety with redundant braking systems, and available in a variety of configurations. Lift-Safe® includes the **DUET-SAFE® Double Action Braking System**

Series LS21H winches are self-starting and are designed for safe operation. They are available in a variety of configurations and are designed for safe operation.



UP TO 11,000 POUNDS
CAPACITY

Lift-Safe® Hydraulic Cable Winches Standard Features

MOTOR-BRAKE

- **DUET-SAFE® Double Action Braking System** **FEDSM**

SUSSEDEUD

U **RUD DEUEDE**

D **DEEDUDESUUD**

FUSUSUDEUS

DSSEDEUUEVED

GEAR CASE

- Made of high strength steel. Completely sealed for oil enclosed operation and to keep dirt out.

PLANETARY GEAR

- High Efficiency Double Reduction Rugged- Built to Last.

GEAR RATIO

- 17:1 standard.

BEARINGS

- Drum Shaft is supported by two heavy duty oil lubricated bearings in gear case, and one permanently sealed ball bearing in end housing.

DRUM SHAFT

- 2-1/4" diameter heat treated alloy steel minimum tensile strength 150,000 psi.

CABLE DRUM

- Tough all steel construction resists breakage or warping.



www.bloommfg.com

BLOOM
Manufacturing Inc.
Winch Division

*Lifting
Pulling
Hoisting*

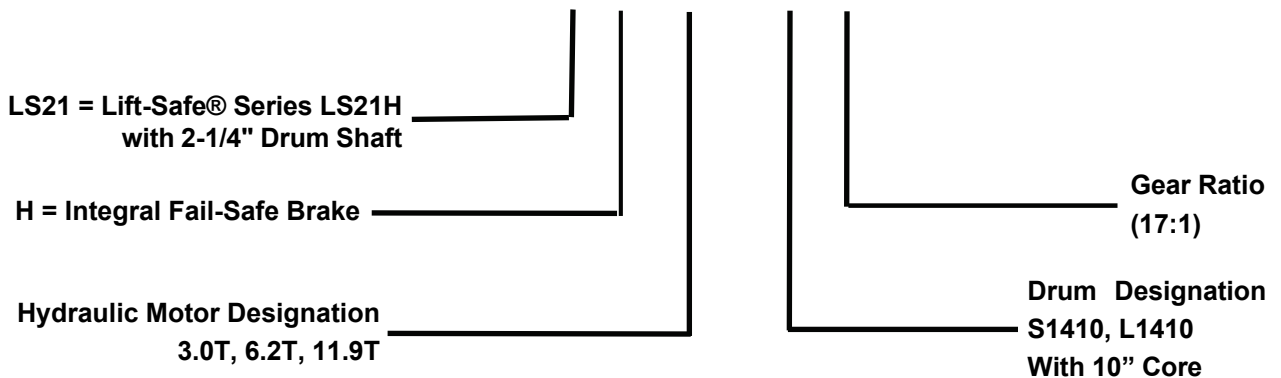
Toll Free Number: 1-800-394-1139

"Custom Engineered Solutions"

1443 220th Street., Independence, Iowa 50644 • FAX: 319-827-1140 • PHONE: 319-827-1139

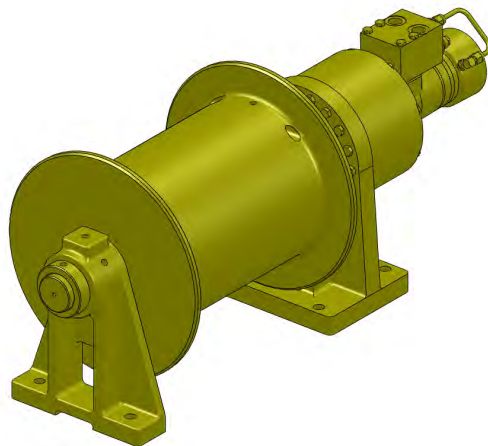
Series LS21H Model Selection from Performance Data

MODEL EXAMPLE: LS21H-6.2T -L1410-17



DRUM CAPACITY

CABLE DIAMETER (IN.)	5/16	3/8	7/16	1/2	9/16	5/8
DRUM "S1410" CAPACITY (FT.)	330	220	140	125	70	65
DRUM "L1410" CAPACITY (FT.)	595	395	250	220	130	115



Lift Safe® Planetary Cable Winches

Series LS21 < W/ 10" Core

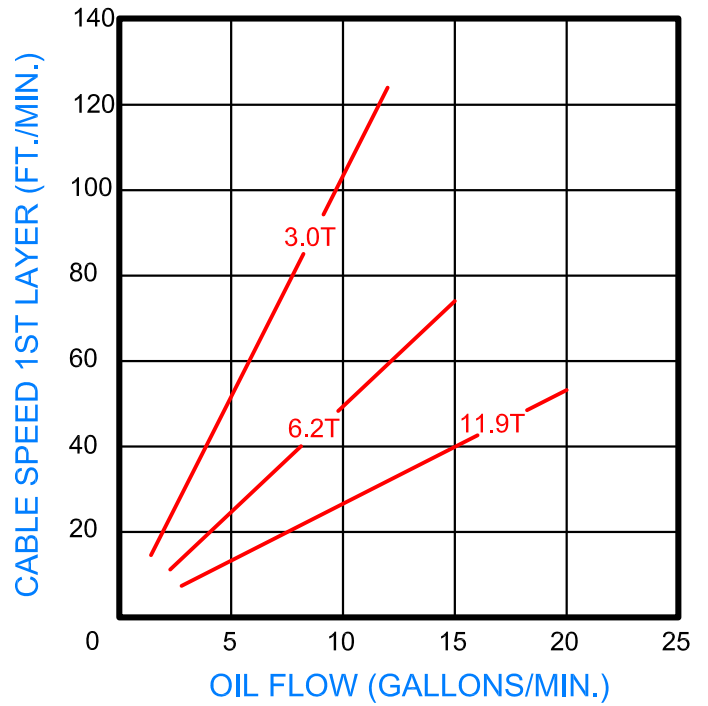
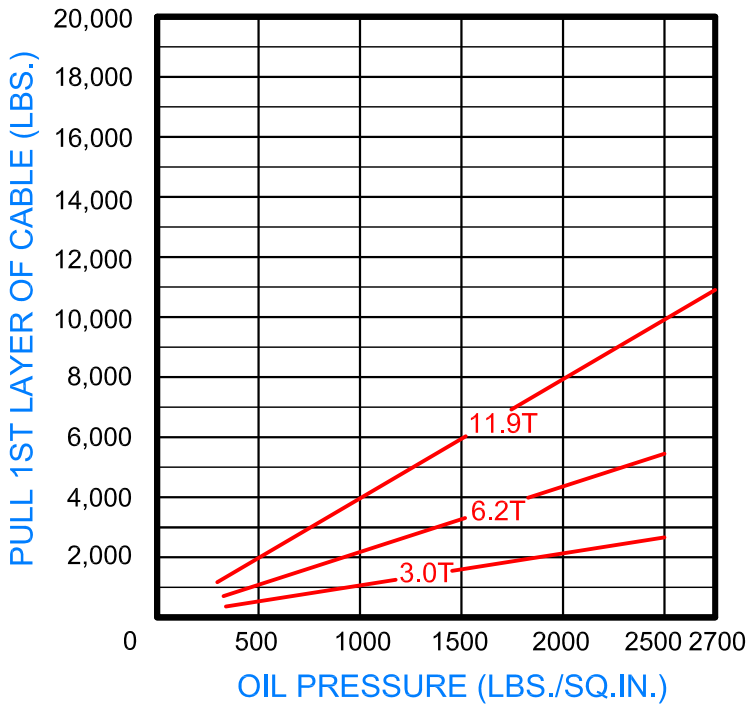
With Hydraulic Fail-safe Brake

Model Selection from Performance Data



"Quality Since 1910"

17:1 RATIO

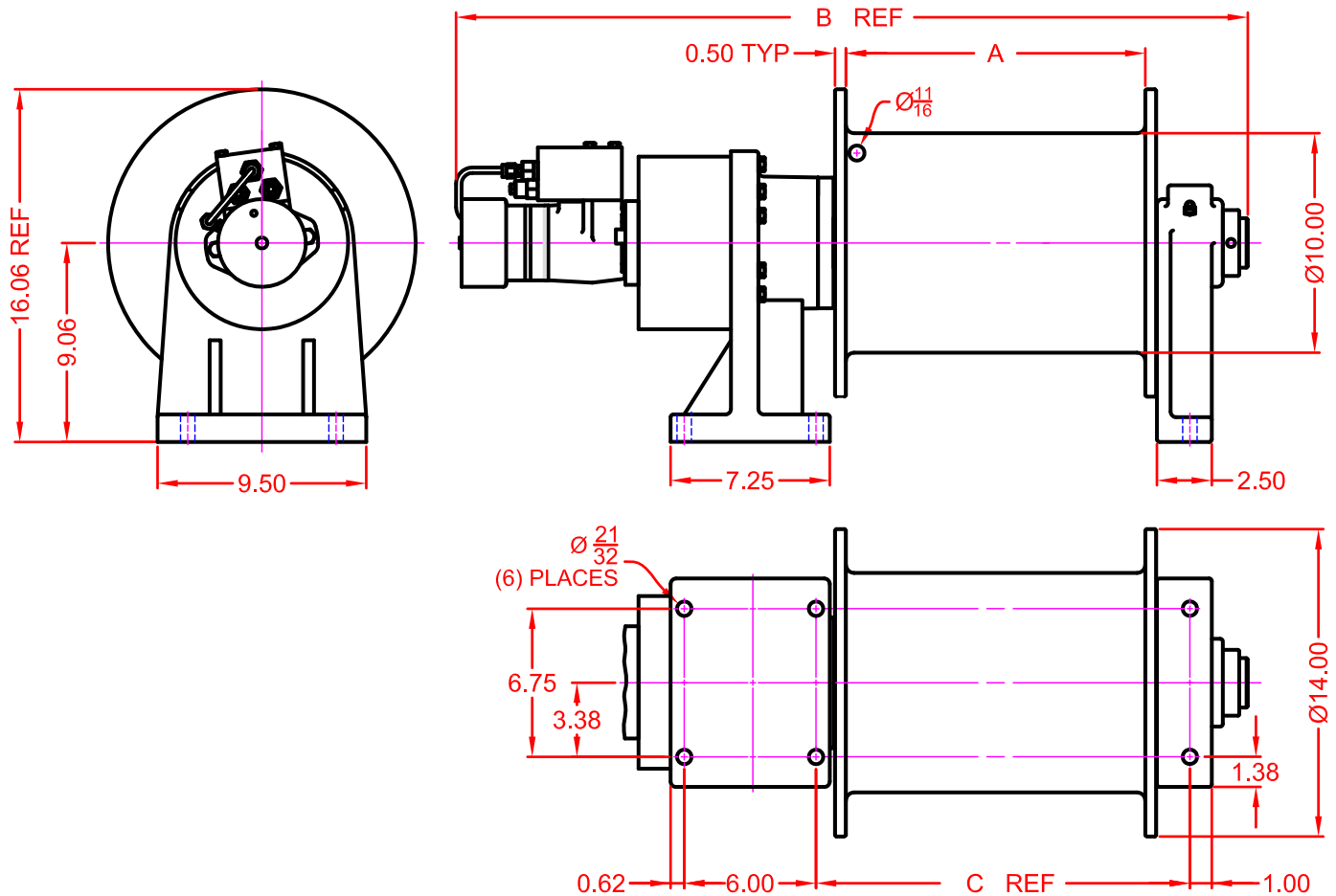




"Quality Since
1910"

Dimensional Drawings

Series LS21H K JH 'G%' '\$' 'UbX' '@%' '\$' '8 fi a
Base Mount Model - Direct Drive



B DIMENSION	MOTOR DESIGNATION		
	3.0T	6.2T	11.9T
S1410 DRUM	29.58	30.05	30.32
L1410DRUM	35.58	36.05	36.32

WINCH DIMENSION	DRUM DESIGNATION	
	S1410 DRUM	L1410 DRUM
A DIMENSION	7.63	13.63
C DIMENSION	11.02	17.02

LIFT-SAFE®

Correct choice of Directional Control Valves for Lift-Safe® Winches

All Lift-Safe® Winches require a Motor Spool Control Valve.

That is the valve s work ports are open to tank in neutral position.

Winches require ridged mounting plate.
See owner s manual for information about proper mounting
plate thickness or call Bloom Sales Engineer at factory

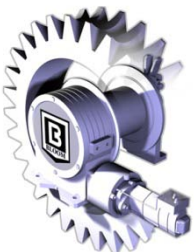
WARNING!

Goods are not intended for use in the moving or lifting of persons!

The winches described herein are neither designed nor intended for use or application to equipment used in the lifting or moving of persons and it is understood that all such use shall be at the sole risk of the user.

The cable clamps on winches are not designed to hold rated loads. A minimum of 5 wraps of cable must be left on drum barrel to guarantee holding of rated load.

Applications of winch where life would be endangered by any event are not recommended.



BLOOM Manufacturing Inc. **Winch Division**

1443 220th Street,, Independence, Iowa 50644

FAX 319-827-1140 PHONE 319-827-1139