

Bloom Manufacturing Inc.



Made in USA

Composite Product Catalog

Quality Hydraulic Cable Winches,
Capstan Winches and Gear Speed Reducers

Website: www.bloommfg.com

E-mail: sales@bloommfg.com



BLOOM
Manufacturing Inc.
Winch Division

*Lifting
Pulling
Hoisting*

Toll Free Number: 1-800-394-1139

www.bloommfg.com

"Custom Engineered Solutions"

1443 220th Street., Independence, Iowa 50644 • FAX: 319-827-1140 • PHONE: 319-827-1139

The Bloom Advantage

Delivery

- Average time is 5-10 days (competitors can run up to 2-3 months)
- 2 to 3 weeks generally for Special or Custom Engineered orders

Service/Repair

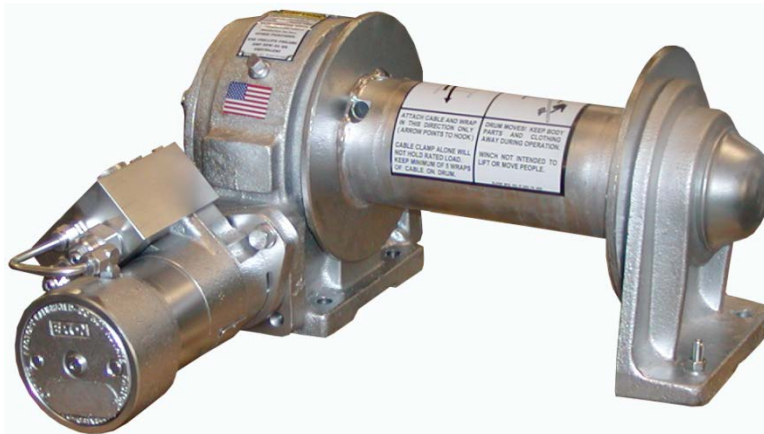
- Fast, Friendly, Customer Service and Technical support
 - Same day shipping on most part orders

Products

- Quality Construction for Years of Dependable Service
- Wide Variety of options available (Brakes, Clutches, Low profile mountings)
 - Large selection of capacities, and speeds for any application
 - Planetary or Worm gear Models

Value

- Sales Engineers available for application assistance
- Custom engineered winches designed for specific applications



Index

Bloom™

Cable Winches – Worm Gear, Pulling

Series 800	(Direct Drive)
Series 800C	(Clutch Drive)
Series 800HC	(Clutch Drive With Fail-Safe Motor Brake)
Series 1000	(Direct Drive)
Series 1000C	(Clutch Drive)
Series 1000HC	(Clutch Drive With Fail-Safe Motor Brake)
Series 1000KC	(Clutch Drive With Fail-Safe Brake)
Series 1100	(Direct Drive)
Series 1100C	(Clutch Drive)
Series 1100HC	(Clutch Drive With Fail-Safe Motor Brake)
Series 1200	(Direct Drive With Oil Cooled Safety Brake)
Series 1200C	(Clutch Drive With Oil Cooled Safety Brake)
Series 1200HC	(Clutch Drive With Fail-Safe Motor Brake)
Series 1400	(Direct Drive)
Series 1400C	(Clutch Drive)
Series 1400KC	(Clutch Drive With Fail-Safe Brake)
Series 1600	(Direct Drive)
Series 1600C	(Clutch Drive)
Series 1600KC	(Clutch Drive With Fail-Safe Brake)

Bloom™

Cable Winches – Planetary, Pulling

Series 2000KC	(Clutch Drive With Fail-Safe Brake)
Series 2000HC	(Clutch Drive With Fail-Safe Motor Brake)
Series 2100KC	(Clutch Drive With Fail-Safe Brake)
Series 2100HC	(Clutch Drive With Fail-Safe Motor Brake)
Series 2200KC	(Clutch Drive With Fail-Safe Brake)
Series 2200HC	(Clutch Drive With Fail-Safe Motor Brake)
Series 2300KC	(Clutch Drive With Fail-Safe Brake)
Series 2300HC	(Clutch Drive With Fail-Safe Motor Brake)
Series 3000KC	(Clutch Drive With Fail-Safe Brake)
Series 3200KC	(Clutch Drive With Fail-Safe Brake)
Series 4000KC	(Clutch Drive With Fail-Safe Brake)
Series 4200KC	(Clutch Drive With Fail-Safe Brake)
Series 7000KC	(Clutch Drive With Fail-Safe Brake)
Series 8000KC	(Clutch Drive With Fail-Safe Brake)

Lift-Safe®

Cable Winches – Worm Gear, Lifting

Series LS8H	(Direct Drive With Fail-Safe Motor Brake)
Series LS10H	(Direct Drive With Fail-Safe Motor Brake)
Series LS10K	(Direct Drive With Fail-Safe Brake)
Series LS11H	(Direct Drive With Fail-Safe Motor Brake)
Series LS12H	(Direct Drive With Fail-Safe Motor Brake)
Series LS14K	(Direct Drive With Fail-Safe Brake)
Series LS16K	(Direct Drive With Fail-Safe Brake)

Lift-Safe®

Cable Winches – Planetary, Lifting

Series LS20K	(Direct Drive With Fail-Safe Brake)
Series LS20H	(Direct Drive With Fail-Safe Motor Brake)
Series LS21K	(Direct Drive With Fail-Safe Brake)
Series LS21H	(Direct Drive With Fail-Safe Motor Brake)
Series LS22K	(Direct Drive With Fail-Safe Brake)
Series LS22H	(Direct Drive With Fail-Safe Motor Brake)
Series LS23K	(Direct Drive With Fail-Safe Brake)
Series LS23H	(Direct Drive With Fail-Safe Motor Brake)
Series LS30K	(Direct Drive With Fail-Safe Brake)
Series LS32K	(Direct Drive With Fail-Safe Brake)
Series LS40K	(Direct Drive With Fail-Safe Brake)
Series LS42K	(Direct Drive With Fail-Safe Brake)
Series LS70K	(Direct Drive With Fail-Safe Brake)
Series LS80K	(Direct Drive With Fail-Safe Brake)

Bloom™

Speed Reducer – Worm Gear

Series 1000	Worm Gear
Series 1100	Worm Gear
Series 1200	Worm Gear
Series 1400	Worm Gear

Bloom™

Speed Reducer - Planetary

Series 2000	Planetary Gear
Series 2200	Planetary Gear

Bloom™

Capstan Winches – Worm Gear

Series 1000	Model 10-A-SR-CAP-10 Model 10-A-SR-CAP-10-GALV Model 10-A-SR-CAP-20 Model 10-A-SR-CAP-20-GALV
Series 1100	Model 11V-A-SR-CAP-10 Model 11V-A-SR-CAP-10-GALV Model 11V-A-SR-CAP-20-GALV Model 11V-A-SR-CAP-20-GALV
Series 1100VSS	Model 11V-C2.95-SR-CAP-10-GALV-5834 Model 11V-C2.95-SR-CAP-20-GALV-5834 Model 11V-A-SR-CAP-10-GALV-5834 Model 11V-A-SR-CAP-20-GALV-5834
Series 1400	Model 14-6.2-SR-CAP-12.5 Model 14-6.2-SR-CAP-12.5-GALV Model 14-6.2-SR-CAP-25 Model 14-6.2-SR-CAP-25-GALV
Series 1400V	Model 14V-6.2-SR-CAP-12.5 Model 14V-6.2-SR-CAP-12.5-GALV Model 14V-6.2-SR-CAP-25 Model 14V-6.2-SR-CAP-25-GALV

Bloom™

Capstan Winches - Planetary

Series 2000H	Model 20H-3.0T-SR-CAP-17 Model 20H-3.0T-SR-CAP-17-GALV Model 20H-3.0T-SR-CAP-17-6148
--------------	--

Bloom™ Series 800, 1000, 1100, 1200 Cable Winches – Worm Gear

Industrial Pulling

Applications include rear load waste packers, fishing boats, marine craft, mining and logging operations, flat bed trailers, air freight pullers, and material handling.

General Features

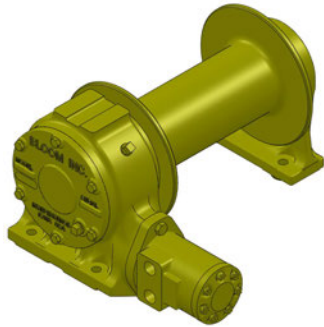
- Motor sizes up to 11.9 cu.in
- Variety of Braking Options
- Output shaft from 1¼" to 1½"
- Optional cable drum sizes
- High strength cast iron and steel construction
- High alloy bronze gear & ground worm shaft
- Heat-treated alloy steel drum shaft
- Directly coupled hydraulic motor

Series 800 (Base or Low Profile)

- 8,000 lbs. capacity
- Gear ratios 10:1 or 20:1
- Speeds up to 110 feet per minute
- Up to 2000 PSI maximum
- Up to 20 GPM maximum

Series 800C - With Dog type clutch for free-spooling drum

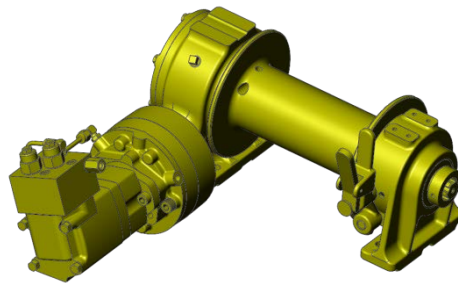
Series 800HC - With Dog type clutch for free-spooling drum and Hydraulic Fail-Safe Motor Brake



Series 800

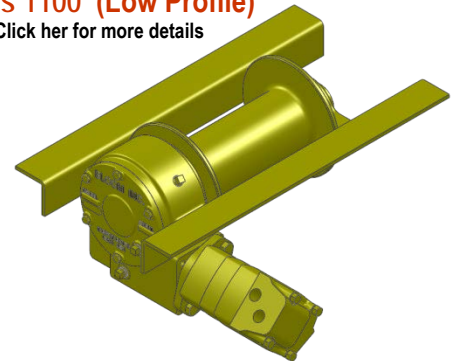
[Click here for more details](#)

Series 1000KC
[Click here for more details](#)



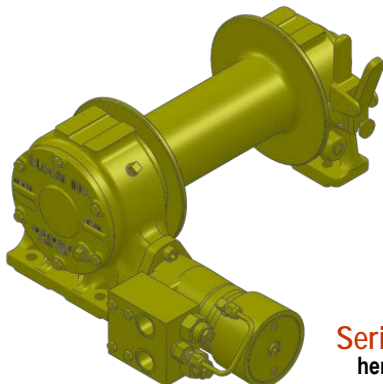
Series 1100 (Low Profile)

[Click her for more details](#)



Series 1000HC, 1100HC (Base or Low Profile)

- Up to 12,000 lbs. maximum capacity
- Gear ratios 10:1, 20:1, 27:1 or 40:1
- With dog type clutch for free-spooling and Hydraulic Fail-Safe Motor Brake
- For up to 2000 PSI and 20 GPM



Series 1000HC [Click here for more details](#)

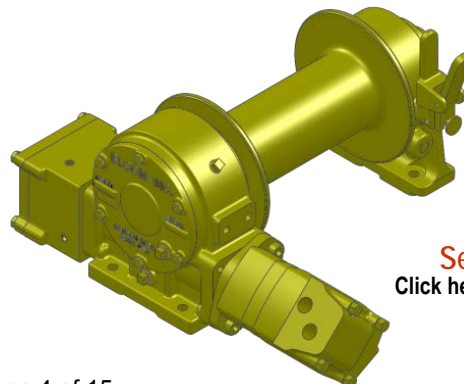
Series 1200 (Base or Low Profile)

- Up to 12,000 lbs. maximum capacity
- Gear ratios 20:1, 27:1 or 40:1

Series 1200 - Oil Cooled Automatic Safety Brake

Series 1200C - Same as Series 1200 with Dog type clutch for free-spooling drum

Series 1200HC - With Dog type clutch for free-spooling drum and Hydraulic Fail-Safe Motor Brake



Series 1200C
[Click here for more details](#)

Bloom™ Series 1400, 1600 Cable Winches – Worm Gear

Industrial Pulling

Applications include rear load waste packers, fishing boats, marine craft, mining and logging operations, flat bed trailers, air freight pullers, and material handling.

General Features

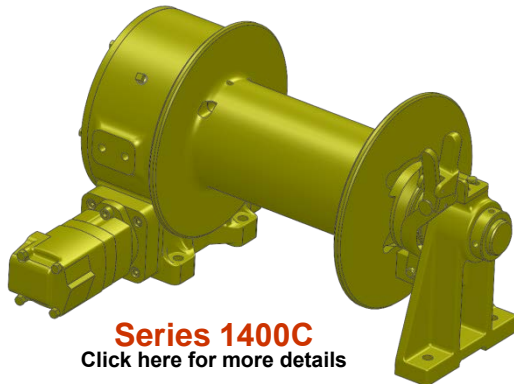
- Motor size up to 18.6 cu. in
- Output shaft up to 2 1/4"
- Right hand or left hand Drum position.
- Gear ratios 12.5:1, 25:1
- High strength cast iron and steel construction
- Heat-treated alloy steel drum shaft
- Directly coupled hydraulic motor
- High tensile aluminum-nickel alloy bronze gear & ground worm shaft

Series 1400 (Base or Low Profile)

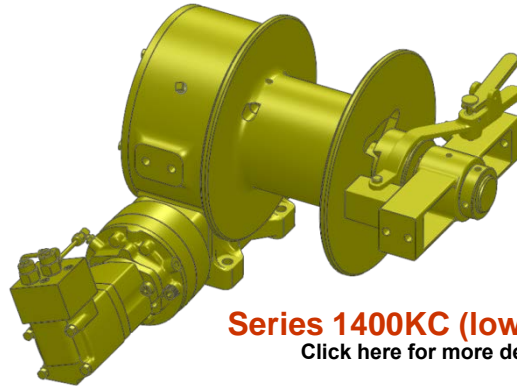
- Up to 15,000 lbs. capacity
- Speeds up to 140 feet per minute
- Up to 3000 PSI maximum
- Up to 25 GPM maximum

Series 1400C - with sliding clutch to allow for free-spooling of the drum

Series 1400KC - with the sliding clutch for free-spooling and the Hydraulic Fail-safe Brake



Series 1400C
[Click here for more details](#)



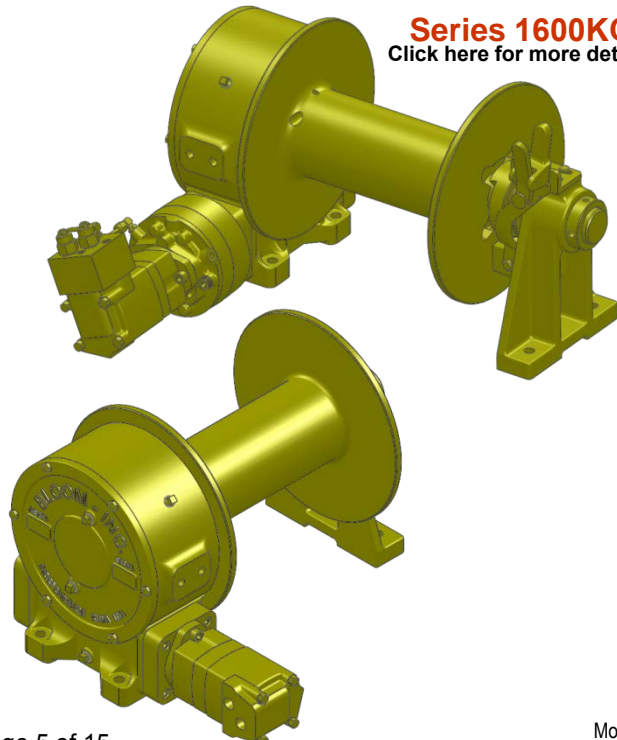
Series 1400KC (low profile)
[Click here for more details](#)

Series 1600 (Base or Low Profile)

- Up to 20,000 lbs. capacity
- Speeds up to 110 feet per minute
- Up to 3000 PSI maximum
- Up to 25 GPM maximum

Series 1600C - with sliding clutch to allow for free-spooling of the drum

Series 1600KC - with the sliding clutch for free-spooling and the Hydraulic Fail-safe Brake



Series 1600
[Click here for more details](#)

Series 1600KC
[Click here for more details](#)

Bloom™ Series 2000, 2100, 2200, 2300 Cable Winches – Planetary

Industrial Pulling

Applications include rear load waste packers, fishing boats, marine craft, mining and logging operations, flat bed trailers, air freight pullers, and material handling.

General Features of 2000 Series

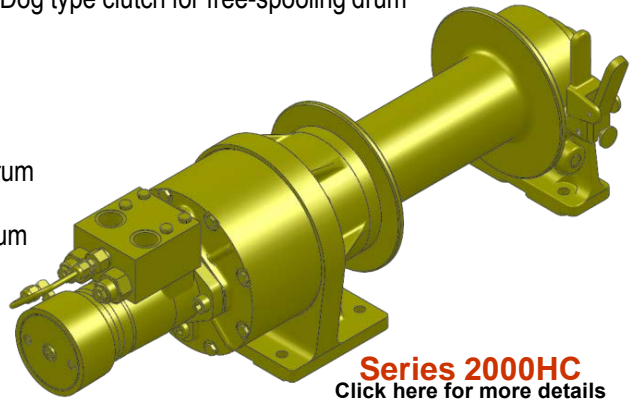
- High strength cast iron and steel gear case
- High efficiency double reduction planetary gear
- Gear ratio 17:1 standard
- Heavy Duty oil lubricated bearings
- 1½" diameter heat-treated alloy steel output shaft
- Dog type clutch for free-spooling drum

Winch Capacity

- Up to 12,800 lbs. capacity

Series 2000KC - With dog type clutch for free-spooling drum and Hydraulic Fail-Safe Brake

Series 2000HC - With dog type clutch for free-spooling drum and Hydraulic Fail-Safe Motor Brake



Series 2000HC
Click here for more details

General Features of 2100, 2200, 2300 Series

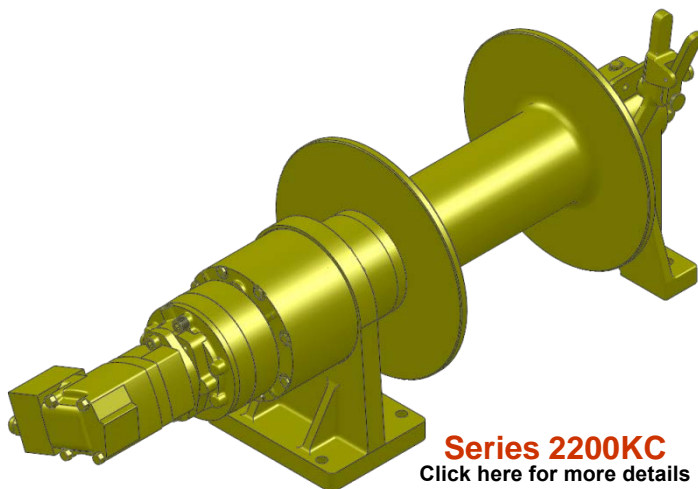
- High strength cast iron and steel gear case
- High efficiency double reduction planetary gear
- Gear ratio 17:1 standard
- Heavy Duty oil lubricated bearings
- 2¼" diameter heat-treated alloy steel output shaft
- Dog type clutch for free-spooling drum

Winch Capacity

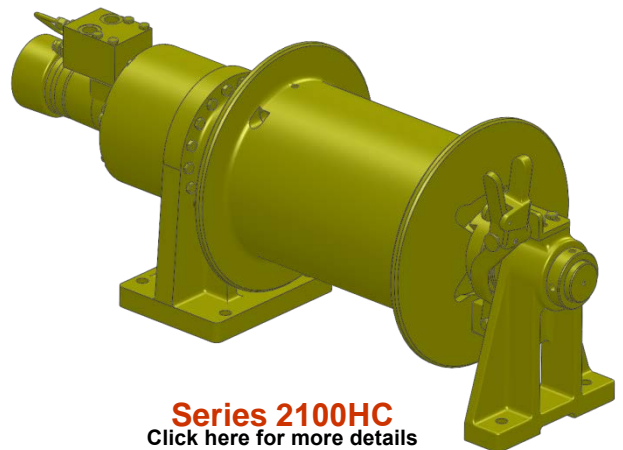
- **Series 2100:** Up to 11,000 lbs.
- **Series 2200:** Up to 20,000 lbs.
- **Series 2300:** Up to 15,000 lbs.

Series 2100KC, 2200KC, 2300KC - With dog type clutch for free-spooling drum and Hydraulic Fail-Safe Brake

Series 2100HC, 2200HC, 2300HC - With dog type clutch for free-spooling drum and Hydraulic Fail-Safe Motor Brake



Series 2200KC
Click here for more details



Series 2100HC
Click here for more details

Bloom™ Series 3000, 3200, 4000, 4200 Cable Winches – Planetary

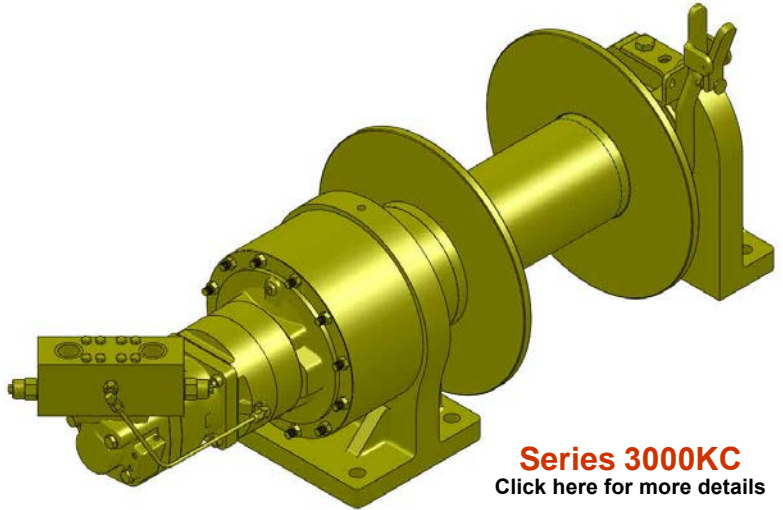
Industrial Pulling

Applications include rear load waste packers, fishing boats, marine craft, mining and logging operations, flat bed trailers, air freight pullers, and material handling.

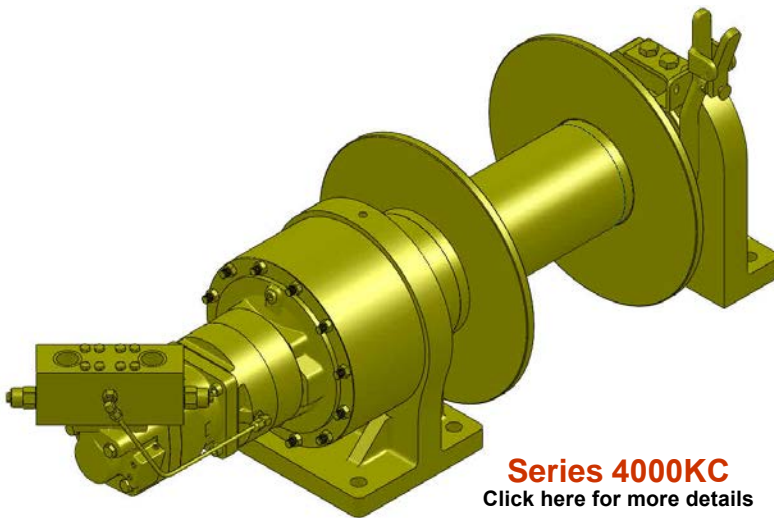
General Features of Series 3000, 3200

- High strength steel gear case
- High efficiency double reduction planetary gear
- Gear ratio 17:1 standard
- Heavy Duty oil lubricated bearings
- 4" diameter heat-treated alloy steel output shaft
- Dog type clutch for free-spooling drum

Series 3000KC, 3200KC: with the sliding clutch for free-spooling and the Hydraulic Fail-Safe Brake



Series 3000KC
Click here for more details



Series 4000KC
Click here for more details

General Features of Series 4000, 4200

- High Strength steel gear case
- High efficiency double reduction planetary gear
- Gear ratio 27:1 standard
- Heavy Duty oil lubricated bearings
- 4" diameter heat-treated alloy steel output shaft
- Dog type clutch for free-spooling drum

Series 4000KC, 4200KC: with the sliding clutch for free-spooling and the Hydraulic Fail-Safe Brake

Winch Capacity

- **Series 3000KC:** Up to 25,000 lbs.
- **Series 3200KC:** Up to 15,000 lbs.
- **Series 4000KC:** Up to 35,000 lbs.
- **Series 4200KC:** Up to 21,000 lbs.

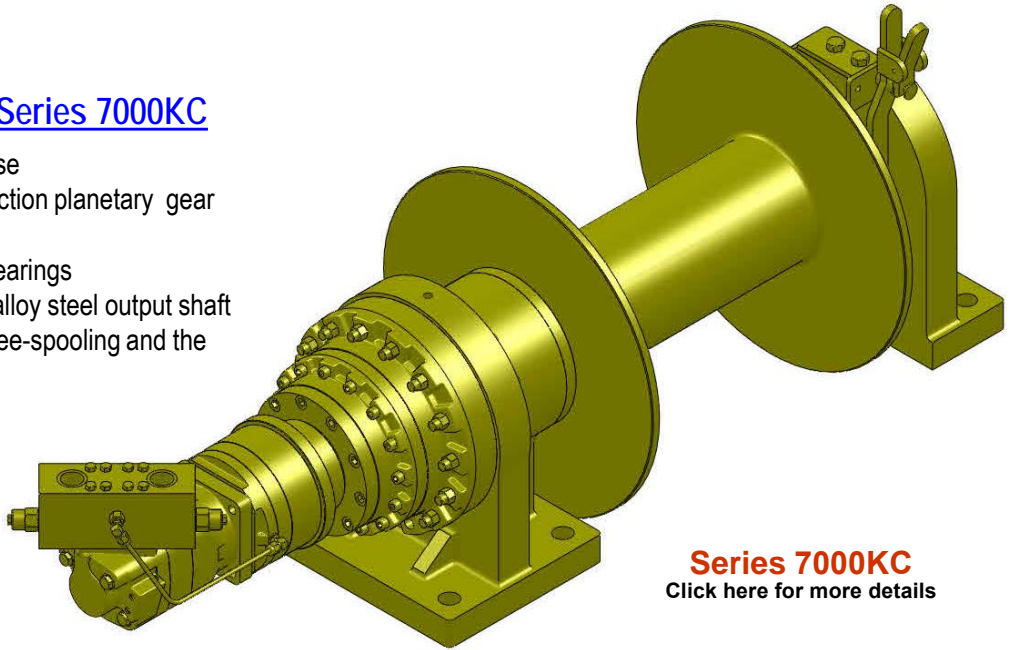
Bloom™ Series 7000, 8000 Cable Winches – Planetary

Industrial Pulling

Applications include rear load waste packers, fishing boats, marine craft, mining and logging operations, flat bed trailers, air freight pullers, and material handling.

General Features of Series 7000KC

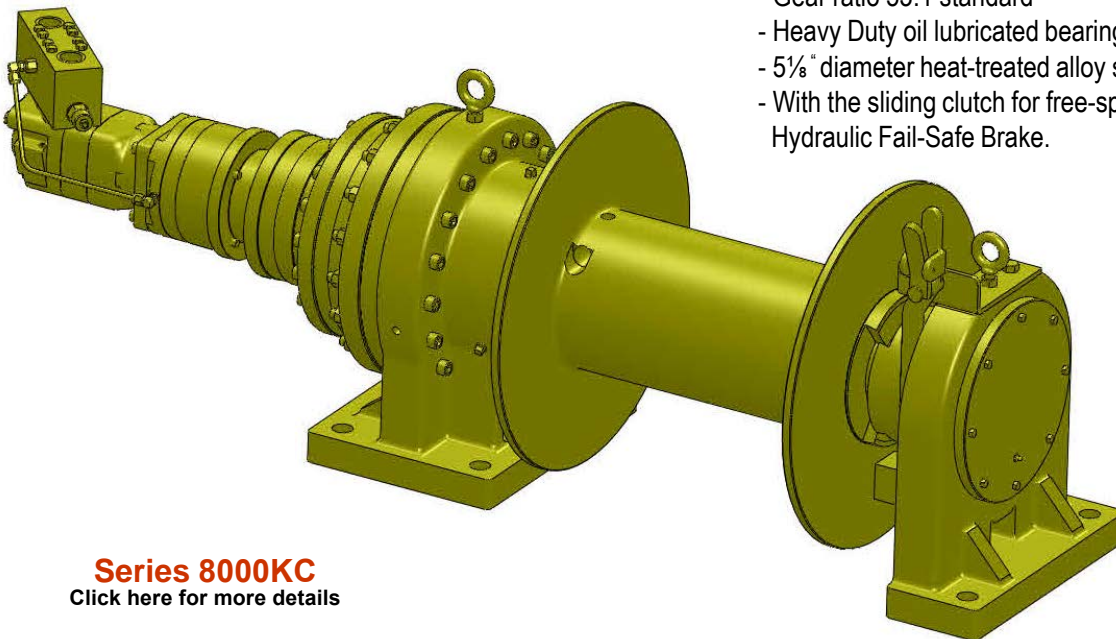
- High strength steel gear case
- High efficiency double reduction planetary gear
- Gear ratio 35:1 standard
- Heavy Duty oil lubricated bearings
- 4¼" diameter heat-treated alloy steel output shaft
- With the sliding clutch for free-spooling and the Hydraulic Fail-Safe Brake.



Series 7000KC
[Click here for more details](#)

General Features of Series 8000KC

- High Strength steel gear case
- High efficiency double reduction planetary gear
- Gear ratio 53:1 standard
- Heavy Duty oil lubricated bearings
- 5½" diameter heat-treated alloy steel output shaft
- With the sliding clutch for free-spooling and the Hydraulic Fail-Safe Brake.



Series 8000KC
[Click here for more details](#)

Winch Capacity

- **Series 7000KC:** up to 55,000 lbs.
- **Series 8000KC:** up to 65,000 lbs..

Lift-Safe® Series LS8H, LS10K, LS10H, LS11H, LS12H Cable Winches – Worm Gear

Industrial Lifting and Hoisting

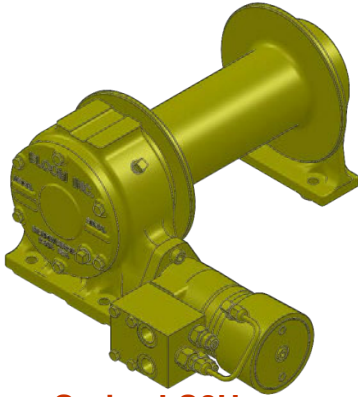
Applications include small cranes, drill rigs and material handling.

General Features

- Motor sizes up to 11.9 cu.in
- Variety of Braking Options
- Output shaft from 1¼" to 1½"
- Optional cable drum sizes
- High strength cast iron and steel construction
- High alloy bronze gear & ground worm shaft
- Heat-treated alloy steel drum shaft
- Directly coupled hydraulic motor

Series 800H (Base or Low Profile)

- 8,000 lbs. capacity
- Gear ratios 10:1 or 20:1
- Speeds up to 110 feet per minute
- With Hydraulic Fail-Safe Motor Brake
- Up to 2000 PSI maximum
- Up to 20 GPM maximum

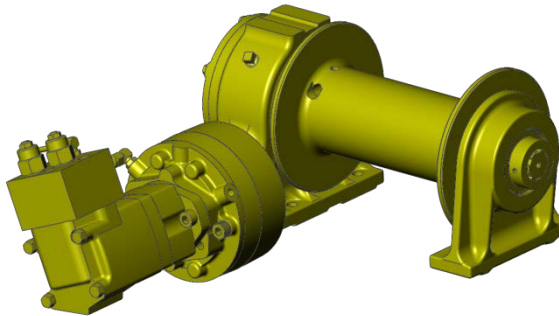


Series LS8H

[Click here for more details](#)

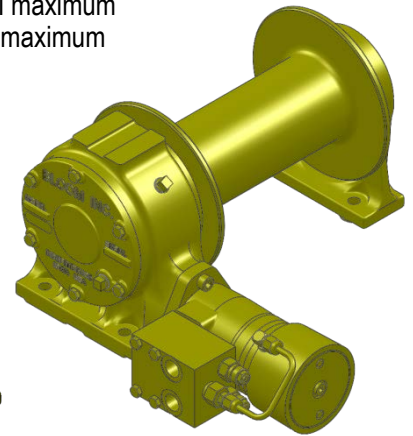
Series LS10K

[Click here for more details](#)



Series LS10K (Base or Low Profile)

- 12,000 lbs. capacity
- Gear ratios 10:1, 20:1, 27:1 or 40:1
- Speeds up to 110 feet per minute
- With Hydraulic Fail-Safe Brake
- Up to 3000 PSI maximum
- Up to 30 GPM maximum

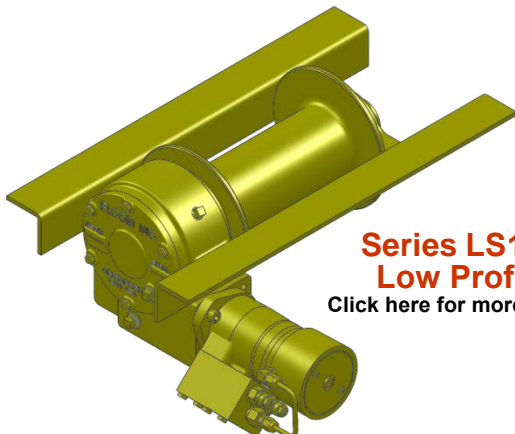


Series LS10H

[Click here for more details](#)

Series LS10H, LS11H (Base or Low Profile)

- Up to 12,000 lbs. maximum capacity
- Gear ratios 10:1, 20:1, 27:1 or 40:1
- With Hydraulic Fail-Safe Motor Brake
- Hydraulic Fail-Safe Motor Brake
- For up to 2000 PSI and 20 GPM

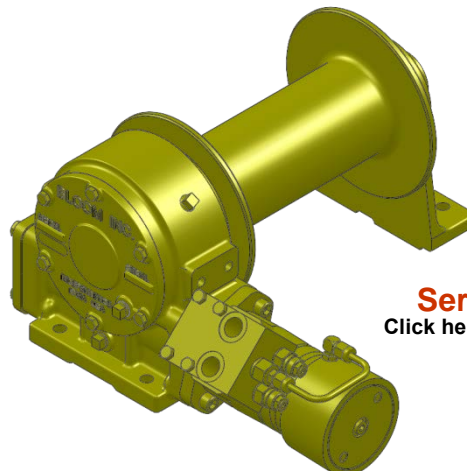


**Series LS11H
Low Profile**

[Click here for more details](#)

Series LS12H (Base or Low Profile)

- Up to 12,000 lbs. maximum capacity
- Gear ratios 20:1, 27:1 or 40:1
- With Hydraulic Fail-Safe Motor Brake



Series LS12H

[Click here for more details](#)

Industrial Lifting and Hoisting

Applications include small cranes, drill rigs and material handling.

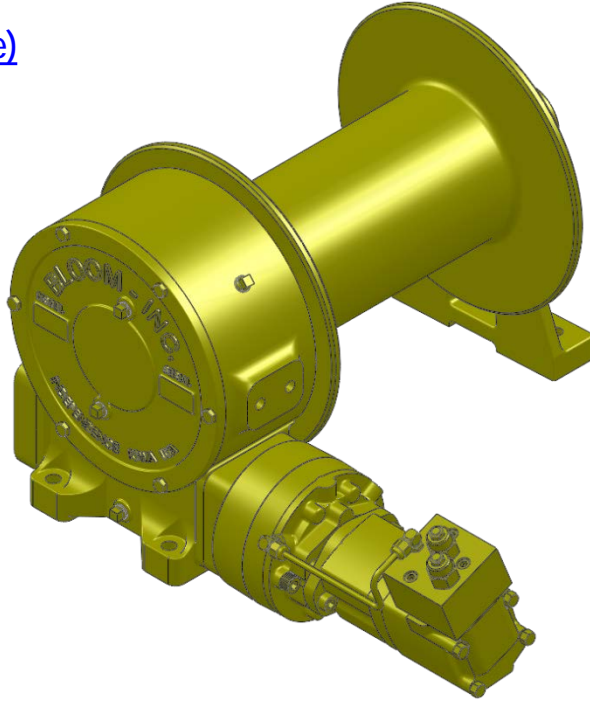
General Features

- Motor size up to 18.6 cu. in
- Output shaft up to 2¼"
- Right hand or left hand Drum position.
- Gear ratios 12.5:1, 25:1
- High strength cast iron and steel construction
- Heat-treated alloy steel drum shaft
- Directly coupled hydraulic motor
- High tensile aluminum-nickel alloy bronze gear & ground worm shaft

Series LS14K (Base or Low Profile)

- Up to 15,000 lbs. capacity
- Speeds up to 140 feet per minute
- With Hydraulic Fail-Safe Brake
- Up to 3000 PSI maximum
- Up to 25 GPM maximum

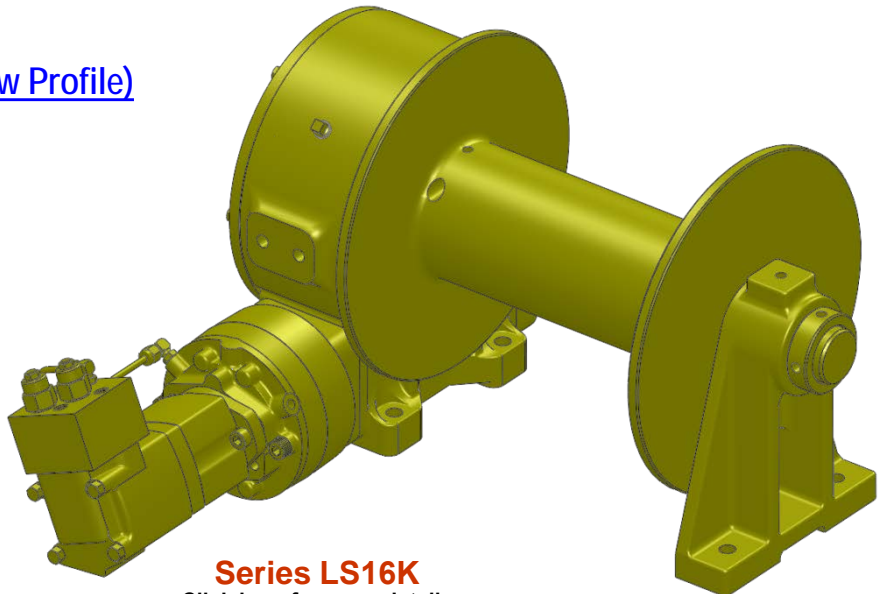
Series LS14K
[Click here for more details](#)



Series LS16K (Base or Low Profile)

- Up to 20,000 lbs. capacity
- Speeds up to 110 feet per minute
- With Hydraulic Fail-Safe Brake
- Up to 3000 PSI maximum
- Up to 25 GPM maximum

Series LS16K
[Click here for more details](#)



Lift-Safe® Series LS20H, LS20K, LS21H, LS21K, LS22H, LS22K, LS23H, LS23K Cable Winches – Planetary

Industrial Lifting and Hoisting

Applications include small cranes, drill rigs and material handling.

General Features of LS20H, LS20K Series

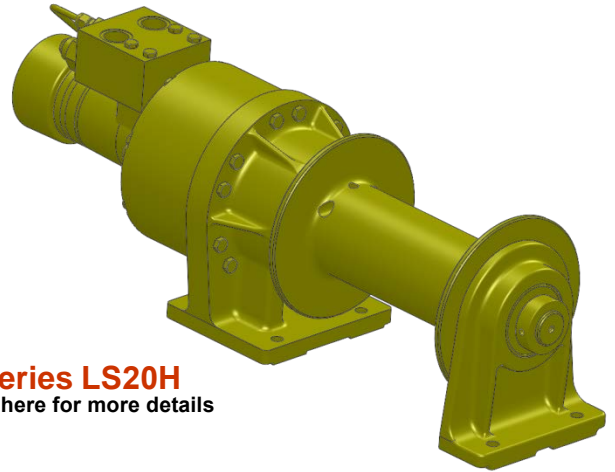
- High strength cast iron and steel gear case
- High efficiency double reduction planetary gear
- Gear ratio 17:1 standard
- Heavy Duty oil lubricated bearings
- 1½" diameter heat-treated alloy steel output shaft

Winch Capacity

- Up to 12,800 lbs. capacity

Series LS20H - With Hydraulic Fail-Safe Motor Brake

Series LS20K - With Hydraulic Fail-Safe Brake



Series LS20H

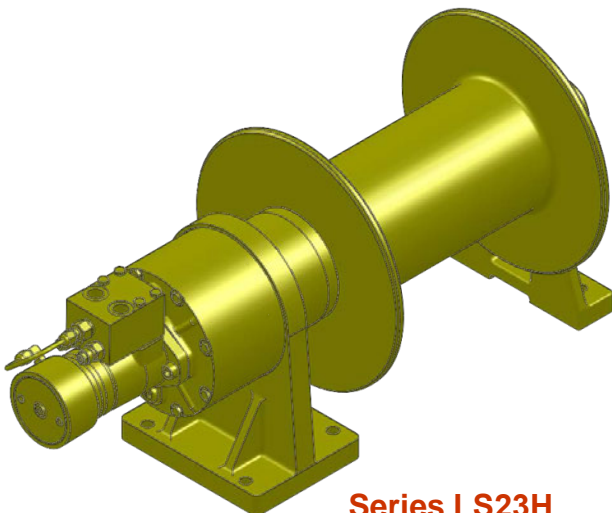
[Click here for more details](#)

General Features of LS21H, LS21K, LS22H, LS22K, LS23H, LS23K Series

- High strength cast iron and steel gear case
- High efficiency double reduction planetary gear
- Gear ratio 17:1 standard
- Heavy Duty oil lubricated bearings
- 2¼" diameter heat-treated alloy steel output shaft

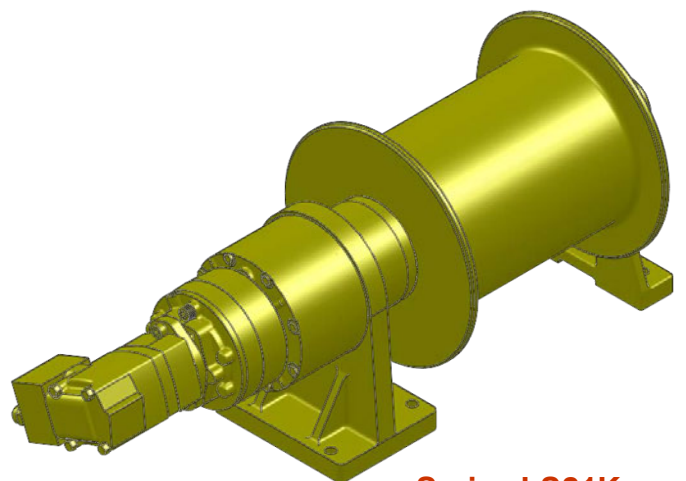
Winch Capacity

- Series LS21H, LS21K: Up to 11,000 lbs.
- Series LS22H, LS23K: Up to 20,000 lbs.
- Series LS23H, LS23K: Up to 15,000 lbs.



Series LS23H

[Click here for more details](#)



Series LS21K

[Click here for more details](#)

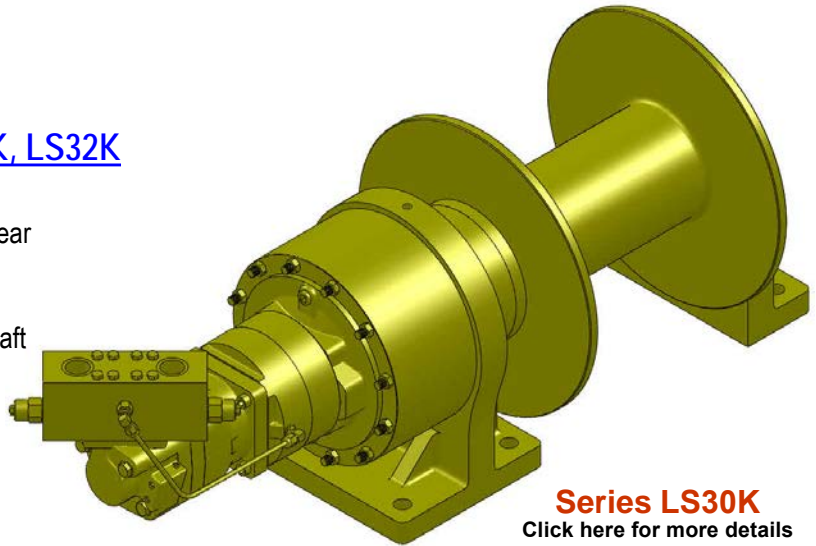
Cable Winches – Planetary

Industrial Lifting and Hoisting

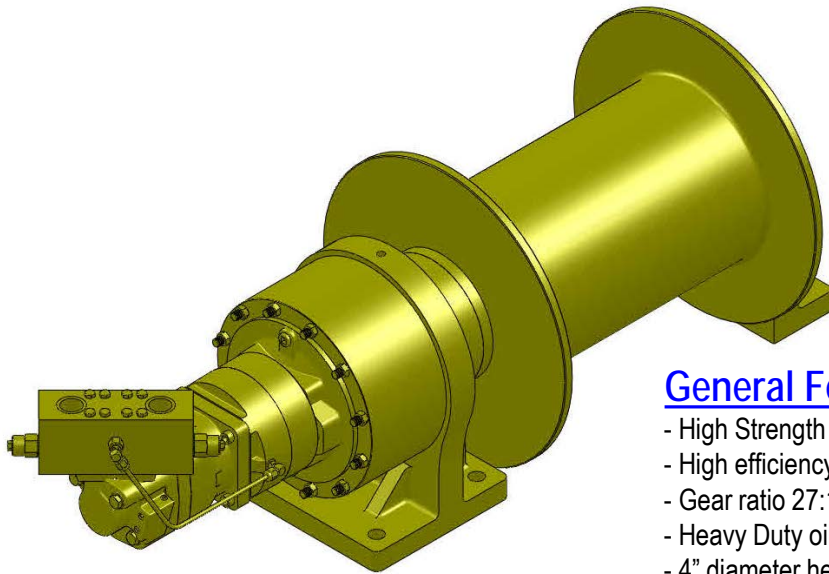
Applications include small cranes, drill rigs and material handling.

General Features of Series LS30K, LS32K

- High strength steel gear case
- High efficiency double reduction planetary gear
- Gear ratio 17:1 standard
- Heavy Duty oil lubricated bearings
- 4" diameter heat-treated alloy steel output shaft
- With Hydraulic Fail-Safe Brake



Series LS30K
[Click here for more details](#)



Series LS42K
[Click here for more details](#)

General Features of Series LS40K, LS42K

- High Strength steel gear case
- High efficiency double reduction planetary gear
- Gear ratio 27:1 standard
- Heavy Duty oil lubricated bearings
- 4" diameter heat-treated alloy steel output shaft
- With Hydraulic Fail-Safe Brake

Winch Capacity

- **Series LS30K:** up to 25,000 lbs.
- **Series LS32K:** up to 15,000 lbs.
- **Series LS40K:** up to 35,000 lbs.
- **Series LS42K:** up to 21,000 lbs.

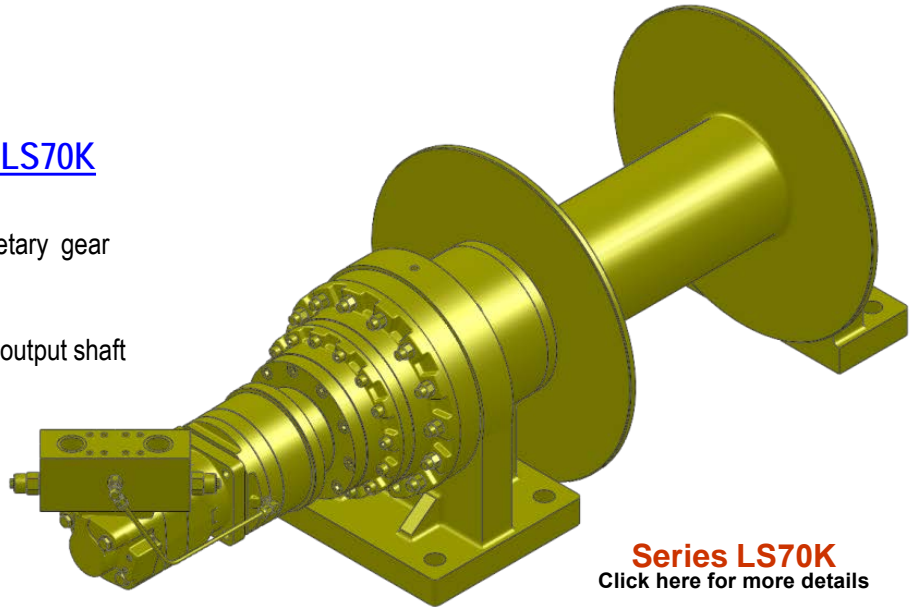
Lift-Safe® Series LS70K, LS80 Cable Winches – Planetary

Industrial Lifting and Hoisting

Applications include small cranes, drill rigs and material handling.

General Features of Series LS70K

- High strength steel gear case
- High efficiency double reduction planetary gear
- Gear ratio 35:1 standard
- Heavy Duty oil lubricated bearings
- 4¼" diameter heat-treated alloy steel output shaft
- With Hydraulic Fail-Safe Brake



Series LS70K
[Click here for more details](#)

Series LS80K

[Click here for more details](#)



General Features of Series LS80K

- High Strength steel gear case
- High efficiency double reduction planetary gear
- Gear ratio 53:1 standard
- Heavy Duty oil lubricated bearings
- 5½" diameter heat-treated alloy steel output shaft
- With Hydraulic Fail-Safe Brake

Winch Capacity

- **Series 7000:** up to 55,000 lbs.
- **Series 8000:** up to 65,000 lbs..

Bloom™ Series 1000, 1100, 1400, 2000 Capstan Winches

" A Pull above the Rest "

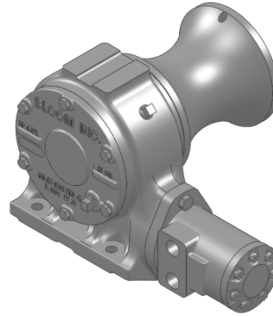
Specifically designed to handle the daily needs of the utility industry. The 1000, 1100, and 1400 Series provide optimum performance in marine applications and environments used as pot and net haulers, dock and barge applications. Galvanized models are also available

General Features of Series 1000, 1100V & 1100VSS -Worm Gear

- High strength cast iron gear case
- One piece alloy steel worm shaft.
- High tensile aluminum-nickel alloy bronze worm gear
- 1½" diameter heat-treated alloy steel output shaft
- Cast aluminum capstan or optional stainless steel
- 3000 lbs. capacity at 55 ft/min. with a ratio 20:1
- 1500 lbs. capacity at 110 ft/min. with a ratio 10:1
- Light weight

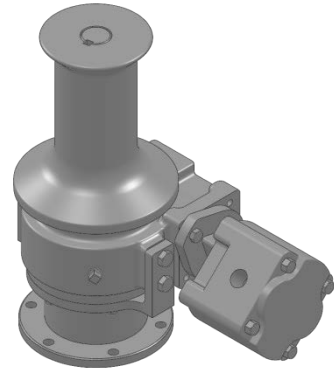
Series 1000 Galvanized

[Click here for more details](#)



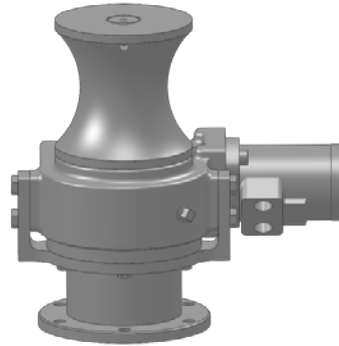
Series 1100VSS

[Click here for more details](#)



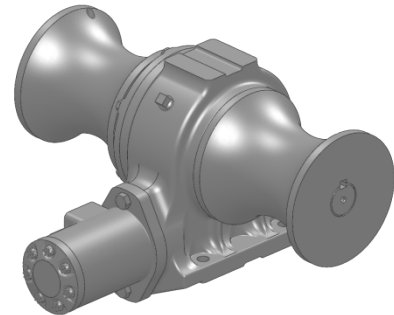
General Features of Series 1400 – Worm Gear

- High strength cast iron gear case
- One piece alloy steel worm shaft
- High tensile aluminum-nickel alloy bronze worm gear
- 2¼" diameter heat-treated alloy steel output shaft
- 8" Cast aluminum capstan
- 7800 lbs. capacity at 50 ft/min. with a ratio 25:1
- 4000 lbs. capacity at 100 ft/min. with a ratio 12.5:1



Series 1100V Galvanized

[Click here for more details](#)

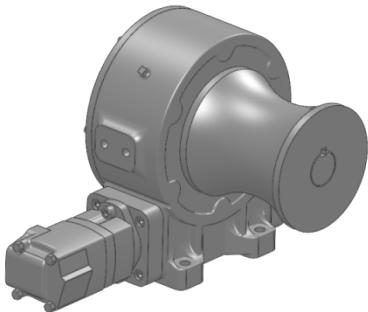


Series 1000 Dual Capstan Galvanized

[Click here for more details](#)

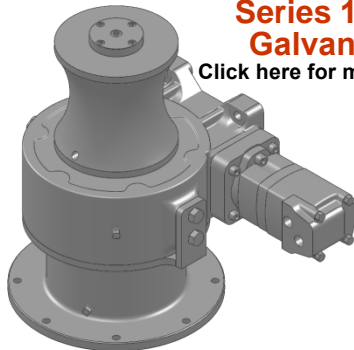
Series 1400 Galvanized

[Click here for more details](#)



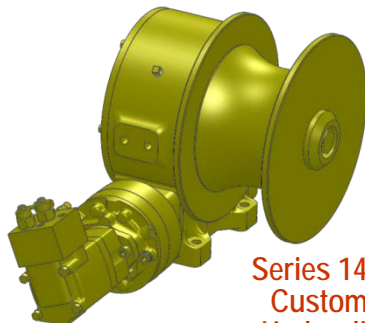
Series 1400V Galvanized

[Click here for more details](#)



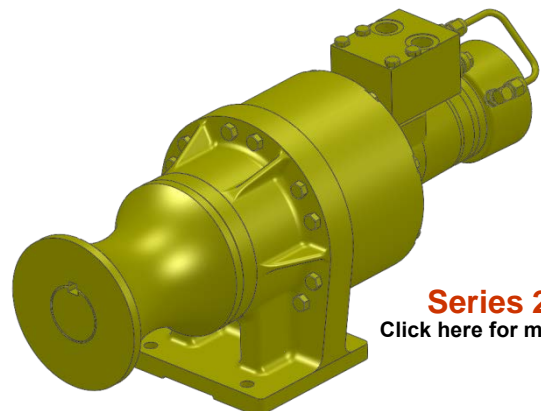
General Features of Series 2000 – Planetary

- High strength cast iron gear case
- 2¼" diameter heat-treated alloy steel output shaft
- Cast aluminum capstan or optional stainless steel
- 6000 lbs. capacity at 65 ft/min. with a ratio 17:1



Series 1400K Capstan with Custom Steel Drum and Hydraulic Fail-safe Brake

[Click here for more details](#)



Series 2000

[Click here for more details](#)

Bloom™ Series 1000, 1100, 1200, 1400 Worm Gear Speed Reducers & Series 2000, 2200 Planetary Speed Reducers

Ideal for stationary & mobile applications where slow speed, high torque or variable speed and reversing are needed. Applications included conveyors, paving and curb forming, ditching, irrigation and plastic extruding equipment.



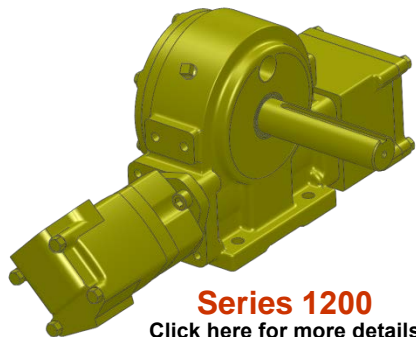
Series 1000
[Click here for more details](#)

Series 1000 & 1100 Features

- 1¼" to 1½" output shaft.
- Up to 11.9 cu.in. motor size
- 10:1, 20:1, 27:1 or 40:1 gear ratio
- Left or right hand shaft position
- Up to 24,000 in.-lbs. output torque
- Optional fail-safe brake



Series 1000
[Click here for more details](#)



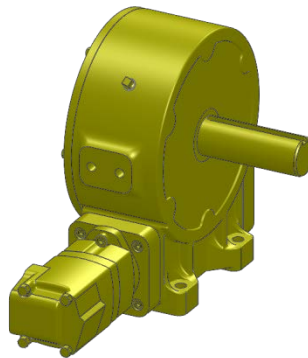
Series 1200
[Click here for more details](#)

Series 1200 Features

- 1½" output shaft
- Up to 11.9 cu.in. motor size
- 20:1, 27:1 or 40:1 gear ratio
- Left or right hand shaft position
- Up to 24,000 in.-lbs. Output torque
- Optional oil cooled automatic safety brake - Single Directional
- Optional low profile mounting

Series 1400 Features

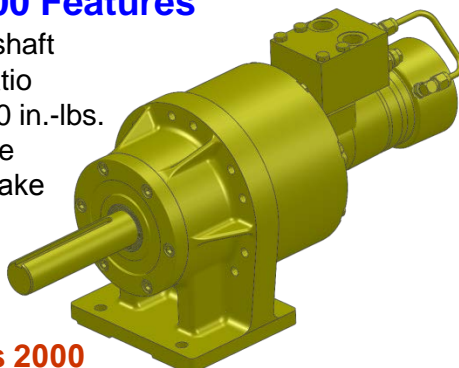
- 2¼" output shaft
- Up to 18.6 cu.in. motor size
- 12.5:1 or 25:1 gear ratio
- Left or right hand shaft position
- Up to 54,000 in.-lbs. output torque
- Optional Fail-Safe brake
- Optional low profile



Series 1400
[Click here for more details](#)

Series 2000 Features

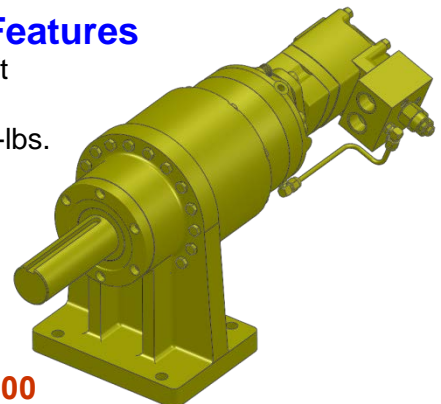
- 1½" output shaft
- 17:1 gear ratio
- Up to 24,000 in.-lbs. output torque
- Fail-Safe Brake



Series 2000
[Click here for more details](#)

Series 2200 Features

- 2¼" output shaft
- 17:1 gear ratio
- Up to 50,000 in.-lbs. output torque
- Fail-Safe Brake



Series 2200
[Click here for more details](#)



**CUSTOM WINCHES ARE OUR SPECIALTY
BLOOM MANUFACTURING INC.**