

BLOOM™ WINCH



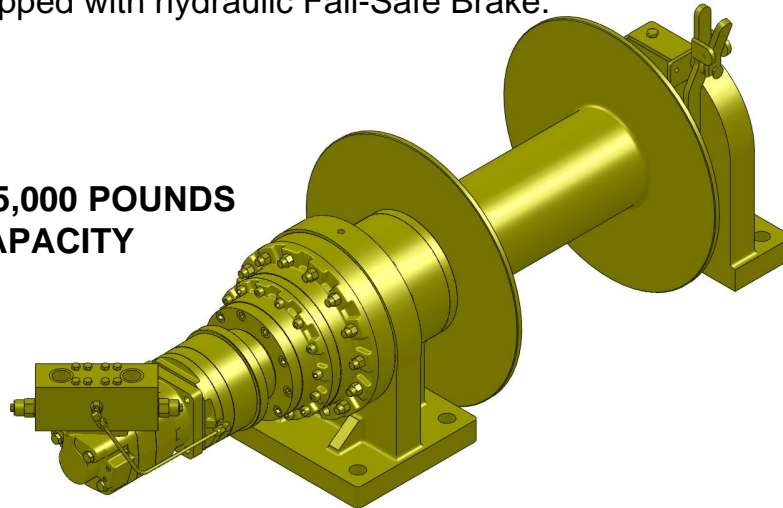
*"Quality Since
1910"*

Series 7000KC

HYDRAULIC PLANETARY CABLE WINCHES

Series 7000KC hydraulic winches are designed for a wide range of applications. Series 7000KC clutch drive winches are equipped with a sliding clutch to allow free-spooling of the drum for pulling and dragging applications including factory material handling, mining and logging equipment, flat bed trailers, air freight pullers and off the road tractors. Series 7000KC is equipped with hydraulic Fail-Safe Brake.

UP TO 55,000 POUNDS
CAPACITY



Bloom™ Hydraulic Cable Winches – Standard Features

- | | |
|-----------------------|---|
| BRAKE | - DUETSAFE® Double Action Braking System combines a powerful spring applied, hydraulic released brake with a double counter balance brake valve to automatically hold loads when hydraulic pressure is released and control speed during lowering operations. Winch is ideal for high speed pulling applications or wherever load holding is critical. |
| GEAR CASE | - Made of high strength steel. Completely sealed for oil enclosed operation and to keep dirt out. |
| PLANETARY GEAR | - High Efficiency – Three Stage, Rugged - Built to Last. |
| GEAR RATIO | - 35:1 standard. |
| BEARINGS | - Drum Shaft is supported by two heavy duty oil lubricated ball bearings in gear case and one re-lubeable sealed ball bearing in end housing. |
| DRUM SHAFT | - 4¼" diameter heat -treated alloy steel |
| CABLE DRUM | - Tough all steel construction resists breakage or warping. |
| CLUTCH | - Series 7000KC winches comes equipped with heat-treated dog type clutch to provide free-spooling of the winch drum. Positive lock-in and lock-out. |



www.bloommfg.com

BLOOM
Manufacturing Inc.
Winch Division

*Lifting
Pulling
Hoisting*

Toll Free Number: 1-800-394-1139

"Custom Engineered Solutions"

1443 220th Street,, Independence, Iowa 50644 • FAX: 319-827-1140 • PHONE: 319-827-1139

BLOOM™ WINCH



Series 7000KC

Model Selection from Performance Data

"Quality Since
1910"

MODEL EXAMPLE: 70K-15.0M-L22-C-35

70 = Series 7000KC
With 4 1/4" Drum Shaft

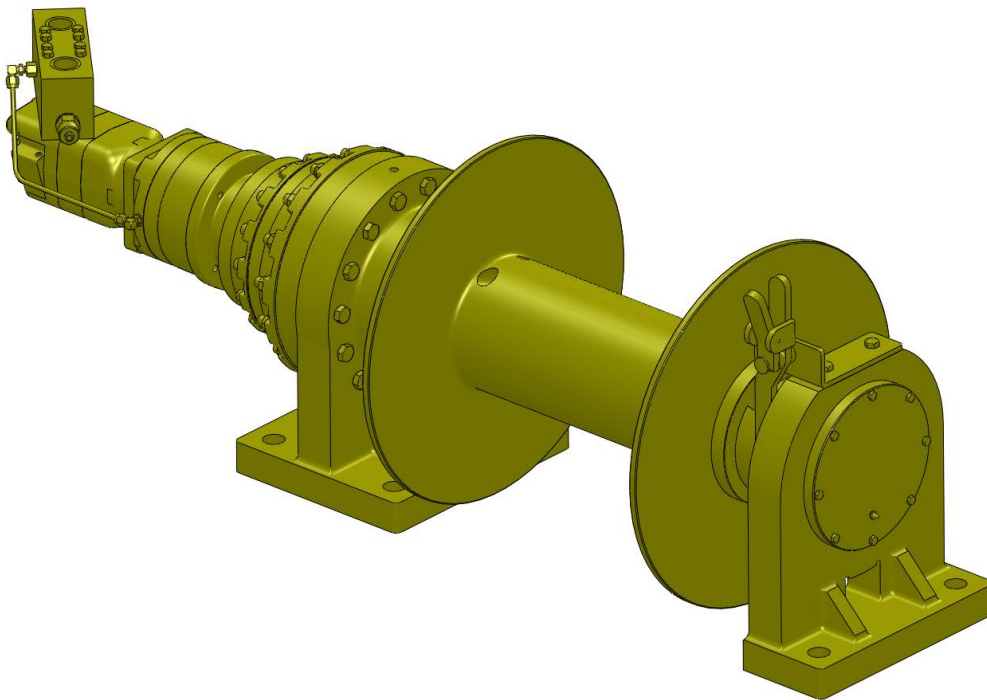
K = Fail-Safe Brake with
Separate Motor

Hydraulic Motor
Designation 15.0M, 19.0M

Gear Ratio
(35:1)

Clutch Designation
(Do not use clutch model
for lifting applications.)

Drum Designation
S22, L22 Drum
With 8" Core



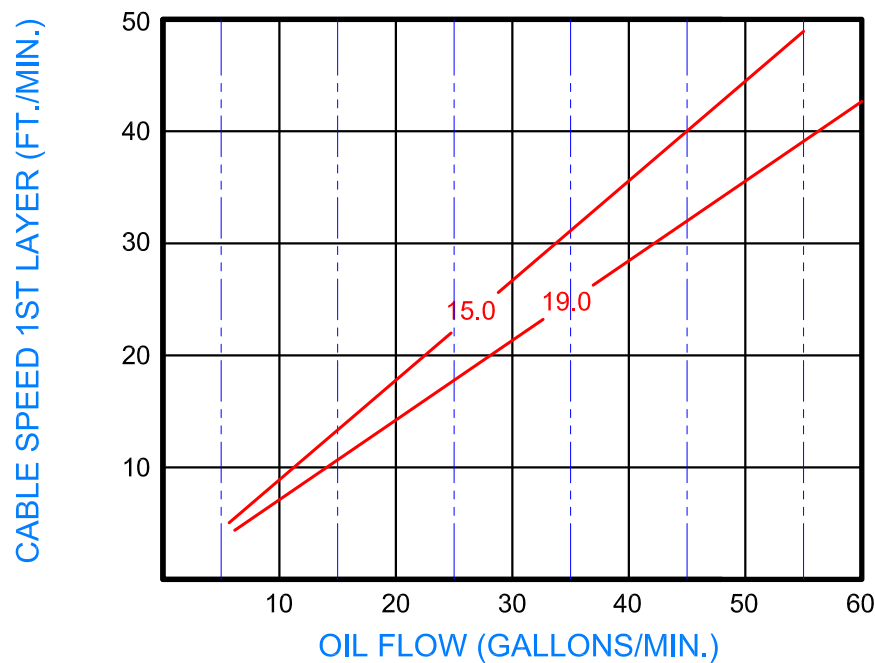
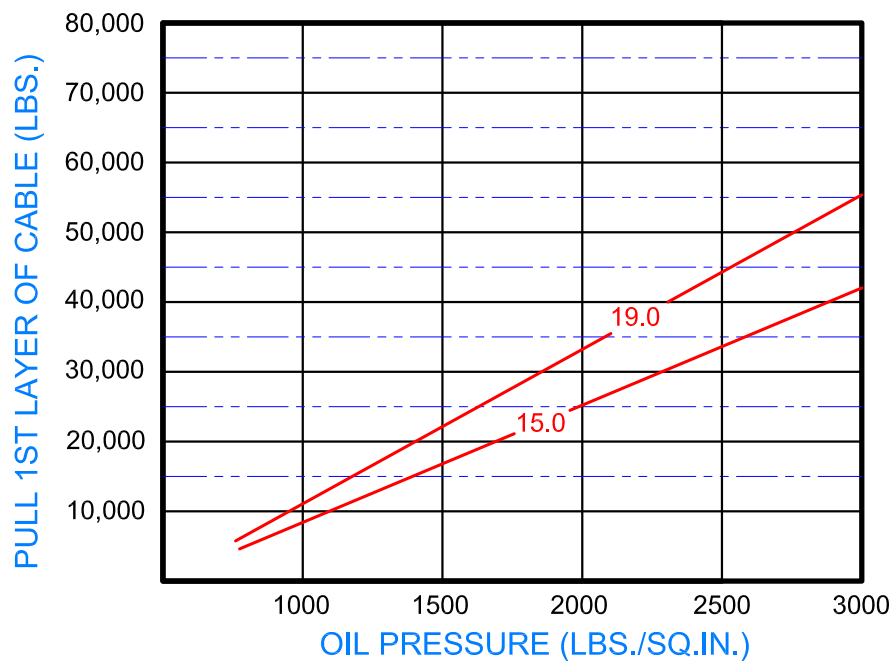
BLOOM™ WINCH



Series 7000KC W/ 8" Core Model Selection from Performance Data

*"Quality Since
1910"*

35:1 RATIO



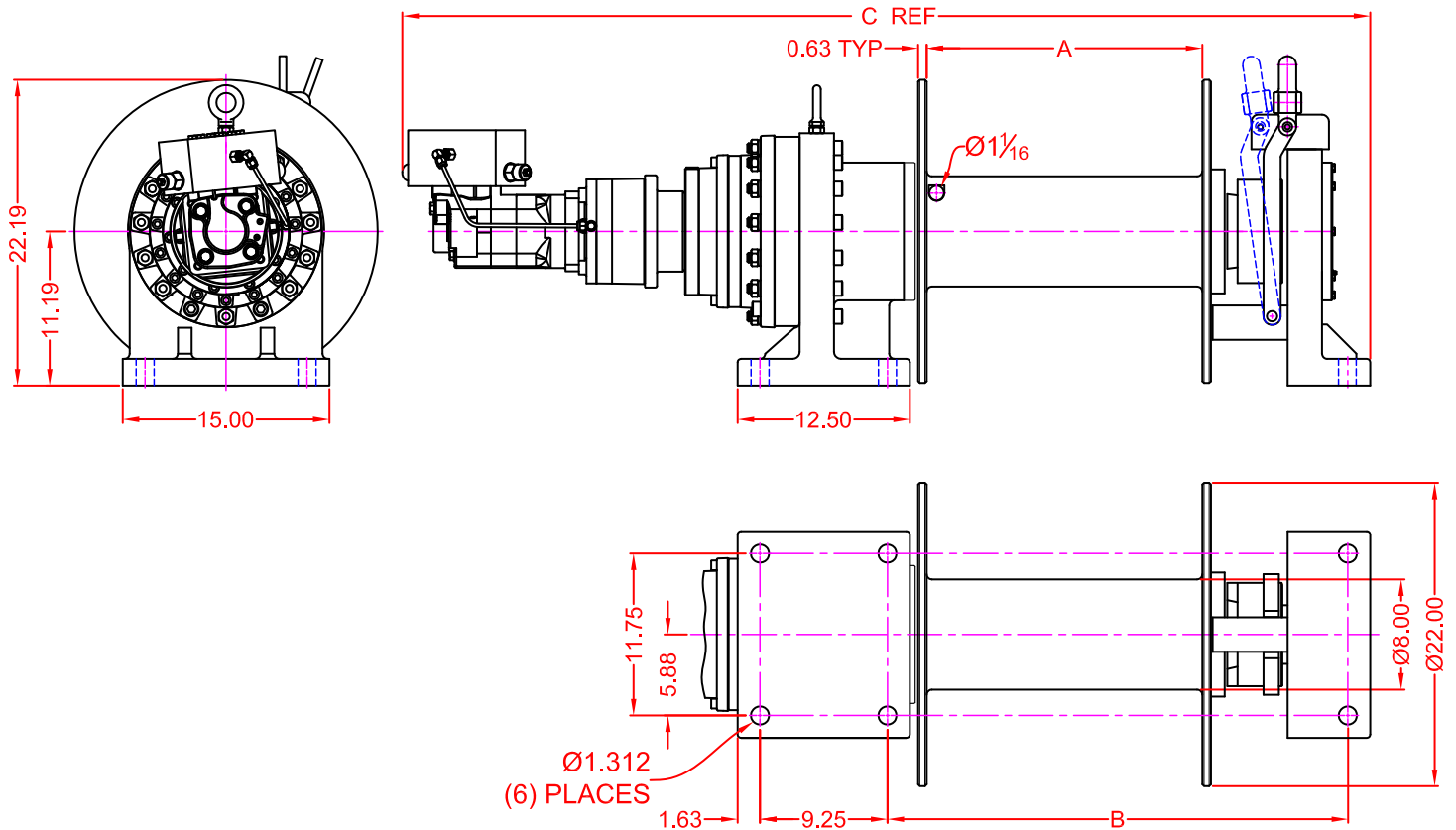


**"Quality Since
1910"**

BLOOM™ WINCH

Dimensional Drawings

Series 7000KC W/ 8" Core
Base Mount Model - Clutch Drive



WINCH DIMENSION	DRUM DESIGNATION	
	S22	L22
A DIMENSION	15	20
B DIMENSION	28.42±0.06	33.42±0.06
C DIMENSION	65.24	70.24

CABLE SIZE (INCH)	CABLE CAPACITY (FT.)	
	S22 DRUM	L22 DRUM
Ø7/8"	500	680
Ø1"	385	510

BLOOMTM WINCH

7000KC SERIES MODEL SELECTION

15.0M MOTOR

70K-15.0M-S22C-35

70K-15.0M-L22C-35

19.0M MOTOR

70K-19.0M-S22C-35

70K-19.0M-L22C-35

BLOOM™ WINCH

Correct choice of Directional Control Valves for Bloom Winches

Winches require a **Motor Spool Control Valve**.
That is the valve's work ports are **open** to tank in neutral position.

*Winches require ridged mounting plate.
See owner's manual for information about proper mounting
plate thickness or call Bloom Sales Engineer at factory

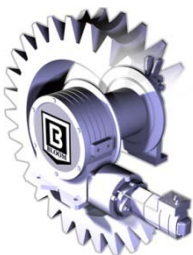
WARNING!

Goods are not intended for use in the moving or lifting of persons!

The winches described herein are neither designed nor intended for use or application to equipment used in the lifting or moving of persons and it is understood that all such use shall be at the sole risk of the user.

The cable clamps on winches are not designed to hold rated loads. A minimum of 5 wraps of cable must be left on drum barrel to guarantee holding of rated load.

Applications of winch where life would be endangered by any event are not recommended.



BLOOM Manufacturing Inc. **Winch Division**

1443 220th Street,, Independence, Iowa 50644

FAX 319-827-1140 PHONE 319-827-1139

www.bloommfg.com

©Copyright 2015 Bloom Mfg. Inc.