

LIFT-SAFE®

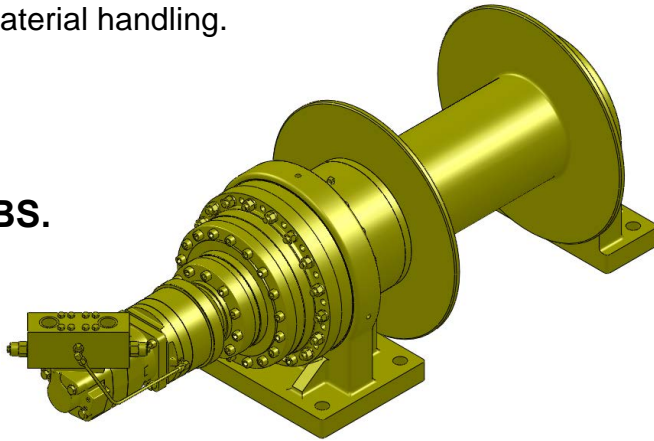
Series LS80K

"Quality Since
1910"

Hydraulic Planetary Cable Winches

Lift-Safe® hydraulic winches are specifically designed for lifting applications and optimum load control. Engineered for enhanced safety with redundant braking systems, and available in a variety of configurations. Lift-Safe® winches utilize the **DUET-SAFE® Double Action Braking System** to provide both static and dynamic braking. Series LS80K direct drive winches are used for industrial pulling and hoisting applications, fishing boats, marine craft, drill rigs, cranes, and factory material handling.

**UP TO 65,000 LBS.
CAPACITY**



Lift-Safe® Hydraulic Cable Winches – Standard Features

BRAKE

- **DUET-SAFE® Double Action Braking System** combines a powerful spring applied, hydraulic released brake with a double counter balance brake valve to automatically hold loads when hydraulic pressure is released and control speed during lowering operations. Winch is ideal for high speed lifting and pulling applications or wherever load holding is critical.

GEAR CASE

- Made of high strength steel. Completely sealed for oil enclosed operation and to keep dirt out.

PLANETARY GEAR

- High Efficiency, Three Stage, Rugged - Built to Last.

GEAR RATIO

- 53:1 standard.

BEARINGS

- Drum Shaft is supported by two heavy duty oil lubricated bearings in gear case, and one re-lubeable sealed ball bearing in end housing.

DRUM SHAFT

- 5-1/8" diameter heat-treated alloy steel

CABLE DRUM

- Tough all steel construction resists breakage or warping.



BLOOM
Manufacturing Inc.
Winch Division

*Lifting
Pulling
Hoisting*

Toll Free Number: 1-800-394-1139

www.bloommfg.com

"Custom Engineered Solutions"

1443 220th Street., Independence, Iowa 50644 • FAX: 319-827-1140 • PHONE: 319-827-1139

LIFT-SAFE®

Series LS80K Model Selection from Performance Data

MODEL EXAMPLE: **LS80K-23.9M L23-53**

LS80 = Lift-Safe® Series 8000
with 5-1/8" Drum Shaft

K = Fail-Safe Brake with
Separate Motor

Hydraulic Motor
Designation 23.9M, 15.0M

Gear Ratio
(53:1)

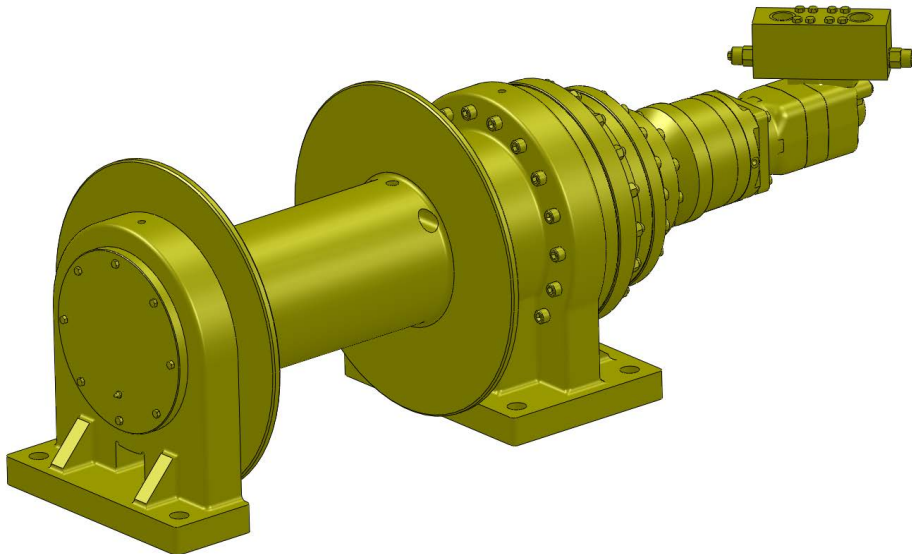
Drum Designation
S23, L23 Drum With
10" Core

(80K) Indicates series 8000K winch with 5-1/8" drum shaft. The "K" indicates 6000 series motor with standard fail-safe brake

(23.9M) Designates hydraulic motor. Motor size is determined from motor performance charts. All motors come complete with attached double counter balance valve.

(L23) Drum designation.

(53) Indicates gear ratio. 53:1 is standard.



Lift Safe® Planetary Cable Winches

Series LS80K W/ 10" Core

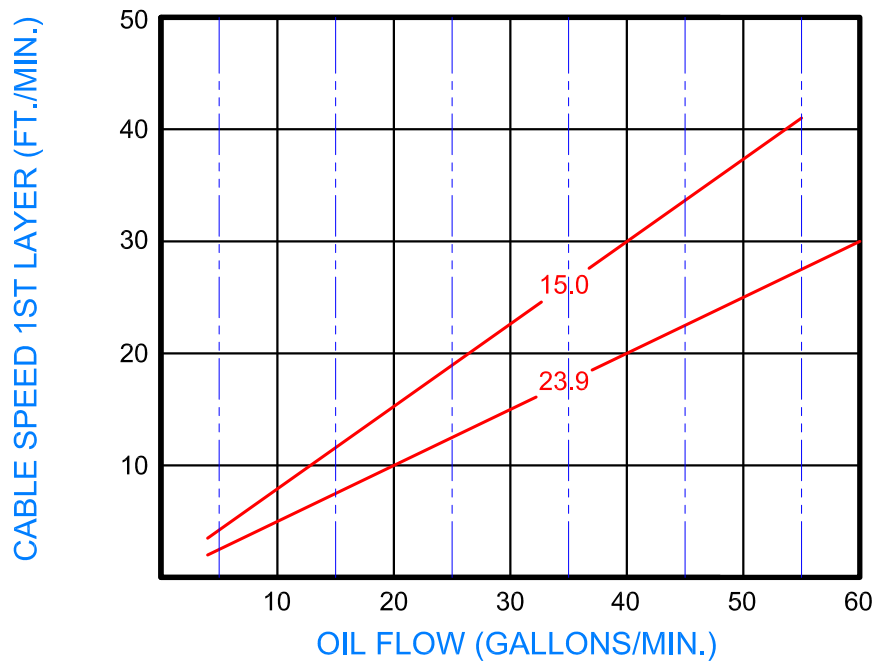
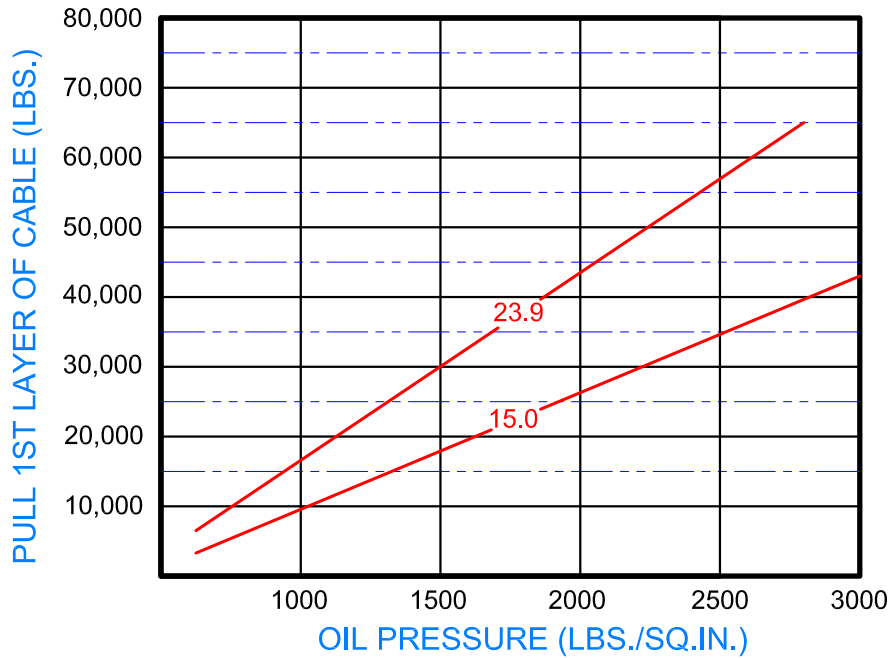
With Hydraulic Fail-safe Brake

Model Selection from Performance Data



"Quality Since 1910"

53:1 RATIO



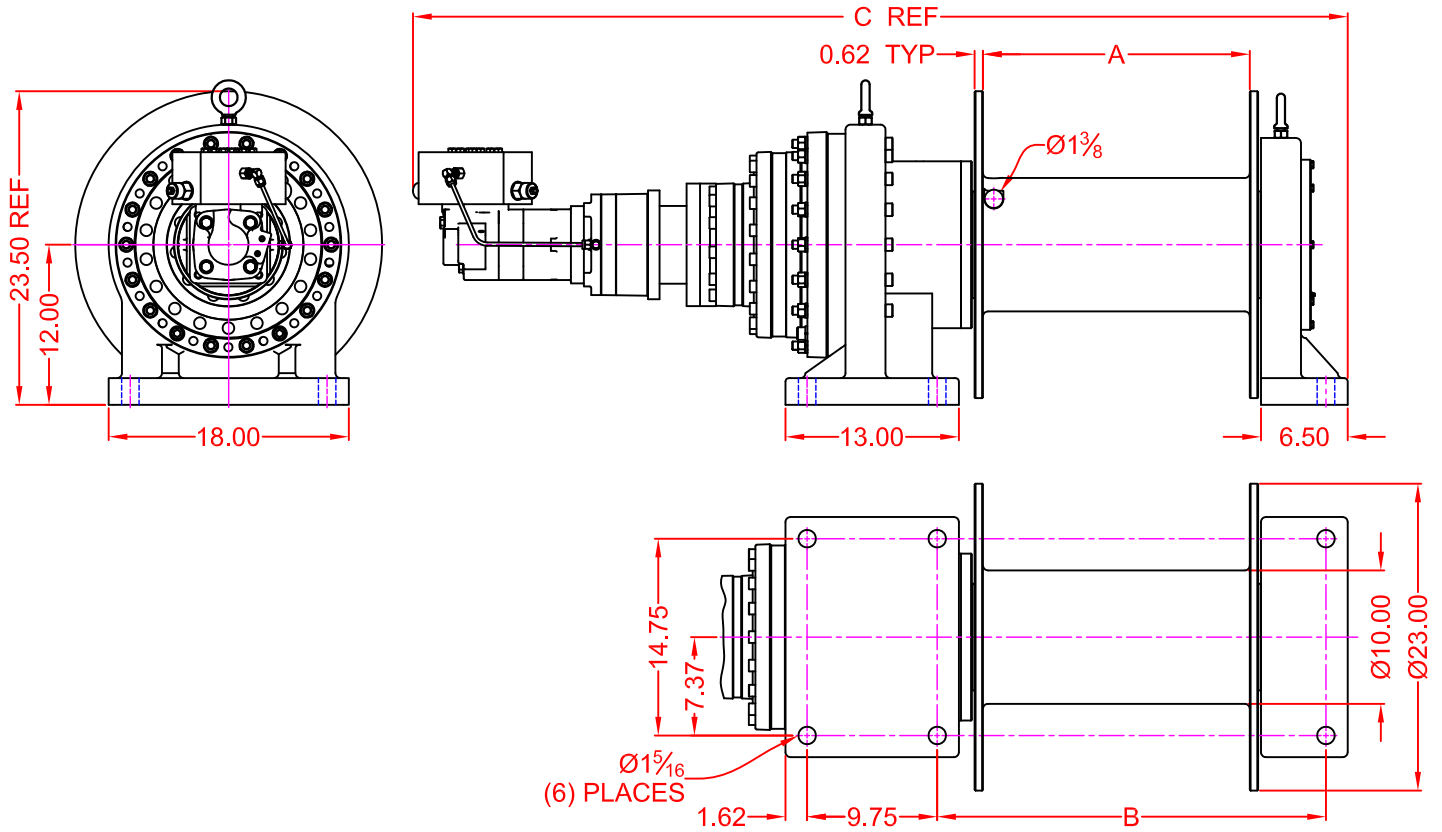


“Quality Since
1910”

LIFT-SAFE®

Dimensional Drawings

Series LS80K W/ 10" Core
Base Mount Model - Direct Drive



WINCH DIMENSION	DRUM DESIGNATION	
	S23	L23
A DIMENSION	15	20
B DIMENSION	24.14±0.06	29.14±0.06
C DIMENSION	65.05	70.05

CABLE SIZE (INCH)	CABLE CAPACITY (FT.)	
	S23 DRUM	L23 DRUM
Ø7/8"	475	645
Ø1"	350	470
Ø1-1/8"	320	420
Ø1-1/4"	230	310

LIFT-SAFE®

Correct choice of Directional Control Valves for Lift-Safe® Winches

All **Lift-Safe®** Winches require a **Motor Spool Control Valve**.

That is the valve's work ports are **open** to tank in neutral position.

*Winches require rigid mounting plate.

See owner's manual for information about proper mounting plate thickness or call Bloom Sales Engineer at factory

WARNING!

Goods are not intended for use in the moving or lifting of persons!

The winches described herein are neither designed nor intended for use or application to equipment used in the lifting or moving of persons and it is understood that all such use shall be at the sole risk of the user.

The cable clamps on winches are not designed to hold rated loads. A minimum of 5 wraps of cable must be left on drum barrel to guarantee holding of rated load.

Applications of winch where life would be endangered by any event are not recommended.



BLOOM Manufacturing Inc. **Winch Division**

1443 220th Street,, Independence, Iowa 50644

FAX 319-827-1140 PHONE 319-827-1139

www.bloommfg.com

Copyright 2012 Bloom Mfg. Inc.