

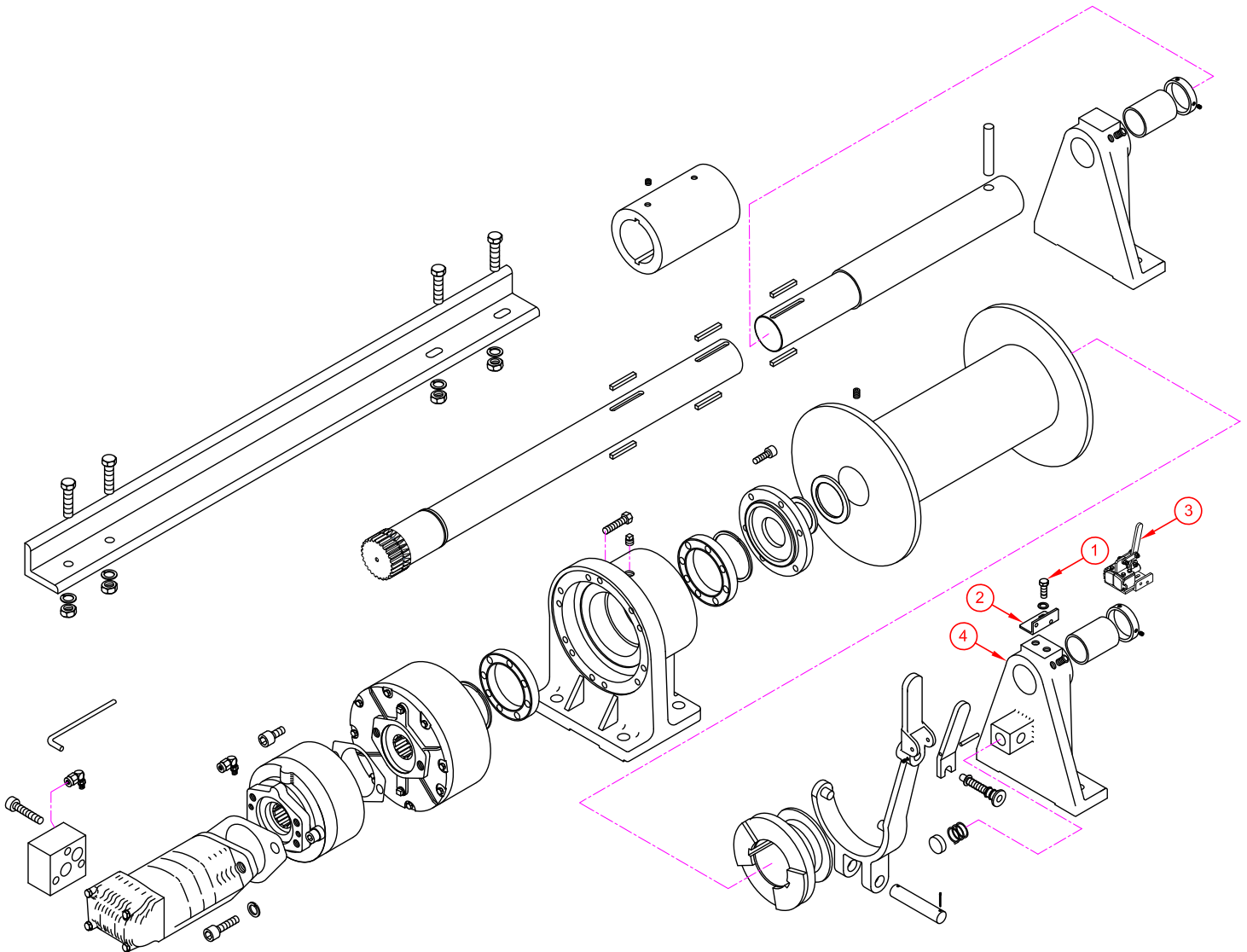
Replacement of Hand Brake



For 6226 Model Winch

See Ref. Drawing

- 1) Remove (2) 3/8"-16 HHCS (ref 1) and clutch position plate (ref 2) from clutch housing (ref 4).
- 2) Install hand brake assembly (ref 3) onto clutch housing (ref 4) with (2) 3/8"-16 HHCS and lock washers (ref 1), and make sure clutch handle pin will engage both holes in clutch position plate.



(replacing of hand brake for 6226 winch)

Bloom Manufacturing Inc.

Winch Division
1443 220th Street
Independence, IA 50644

www.bloommfg.com

Email: sales@bloommfg.com engineering@bloommfg.com

800-394-1139 tel
319-827-1139 tel
319-827-1140 fax