

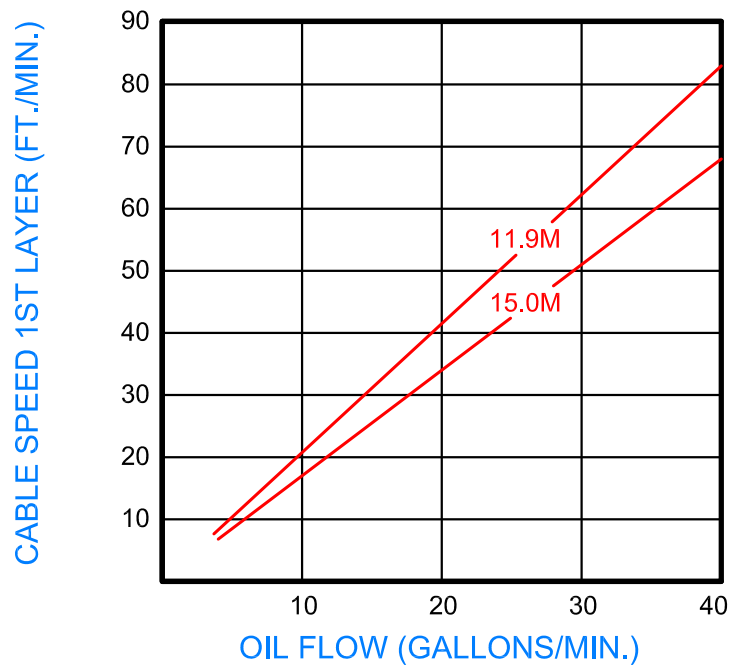
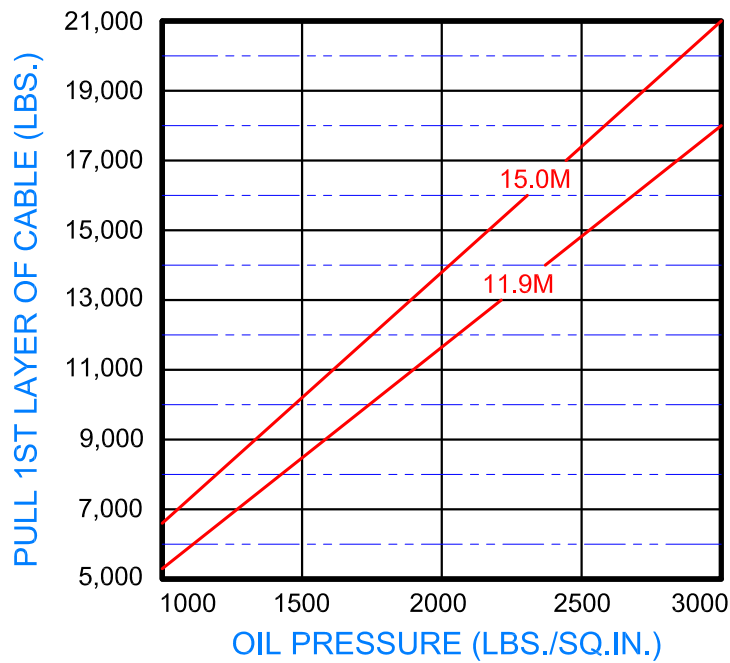
BLOOM™ WINCH



Series 4200KC W/ 12" Core
Model Selection from Performance Data

*"Quality Since
1910"*

27:1 RATIO



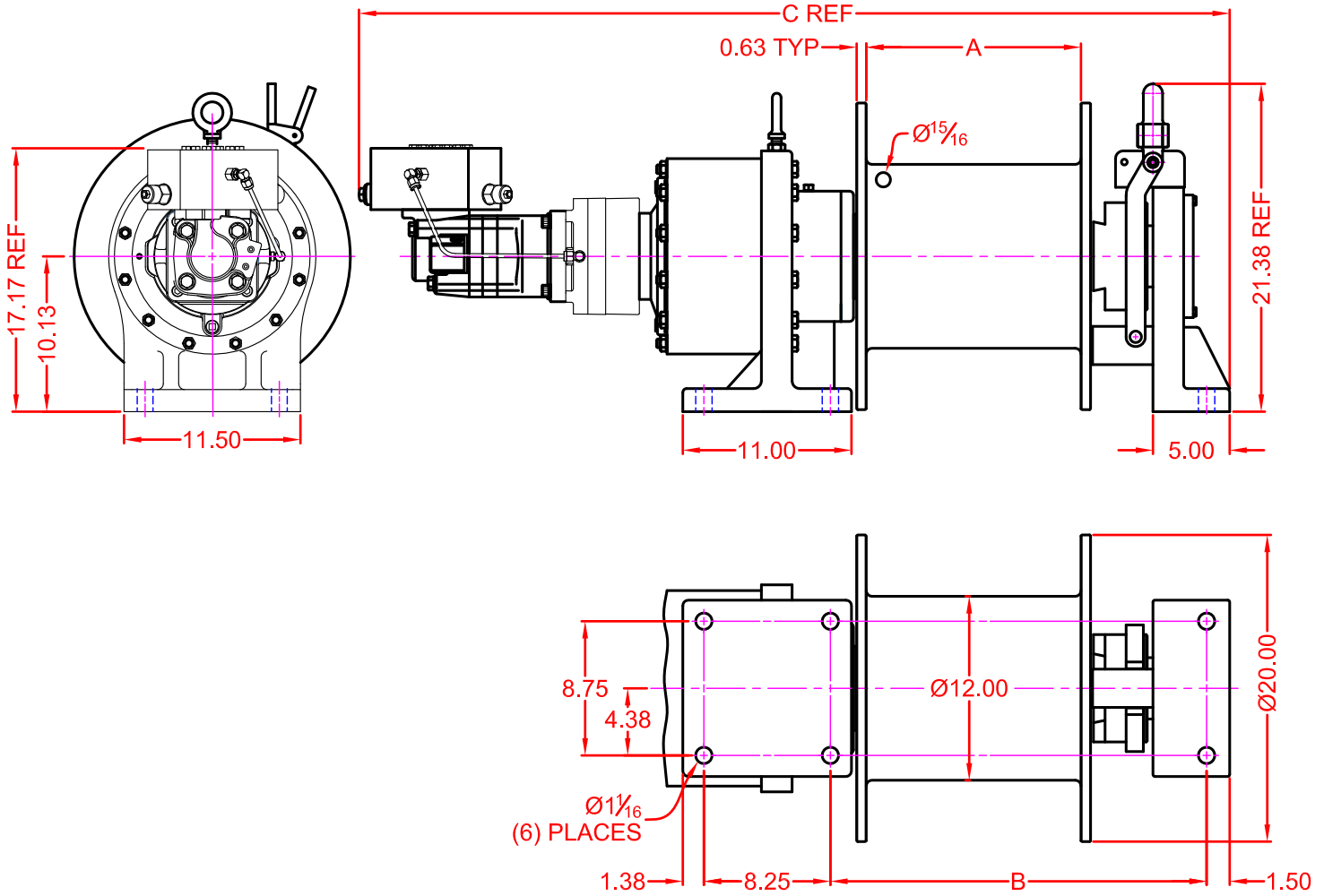


"Quality Since
1910"

BLOOM™ WINCH

Dimensional Drawings

Series 42\$\$?7 K Jh 'G2012, L2012'UbX'X@2012'8 fi a
Base Mount Model - 7`i HW Drive



WINCH DIMENSION	DRUM DESIGNATION		
	S2012C	L2012C	XL2012C
A DIMENSION	8	14	20
B DIMENSION	18.46±0.06	24.46±0.06	30.46±0.06
C DIMENSION	50.69	56.69	62.69

CABLE SIZE (INCH)	CABLE CAPACITY (FT.)		
	S2012C DRUM	L2012C DRUM	XL2012C DRUM
Ø3/4"	150	260	375
Ø7/8"	95	165	235

BLOOM™ WINCH

Correct choice of Directional Control Valves for Bloom Winches

Winches require a **Motor Spool Control Valve**.
That is the valve's work ports are **open** to tank in neutral position.

*Winches require ridged mounting plate.
See owner's manual for information about proper mounting
plate thickness or call Bloom Sales Engineer at factory

WARNING!

Goods are not intended for use in the moving or lifting of
persons!

The winches described herein are neither designed nor intended
for use or application to equipment used in the lifting or moving of
persons and it is understood that all such use shall be at the sole
risk of the user.

The cable clamps on winches are not designed to hold rated
loads. A minimum of 5 wraps of cable must be left on drum barrel
to guarantee holding of rated load.

Applications of winch where life would be endangered by any
event are not recommended.



BLOOM Manufacturing Inc. Winch Division

1443 220th Street, Independence, Iowa 50644

FAX 319-827-1140 PHONE 319-827-1139

www.bloommfg.com

©Copyright 2010 Bloom Mfg. Inc.