

# POWER-FLITE

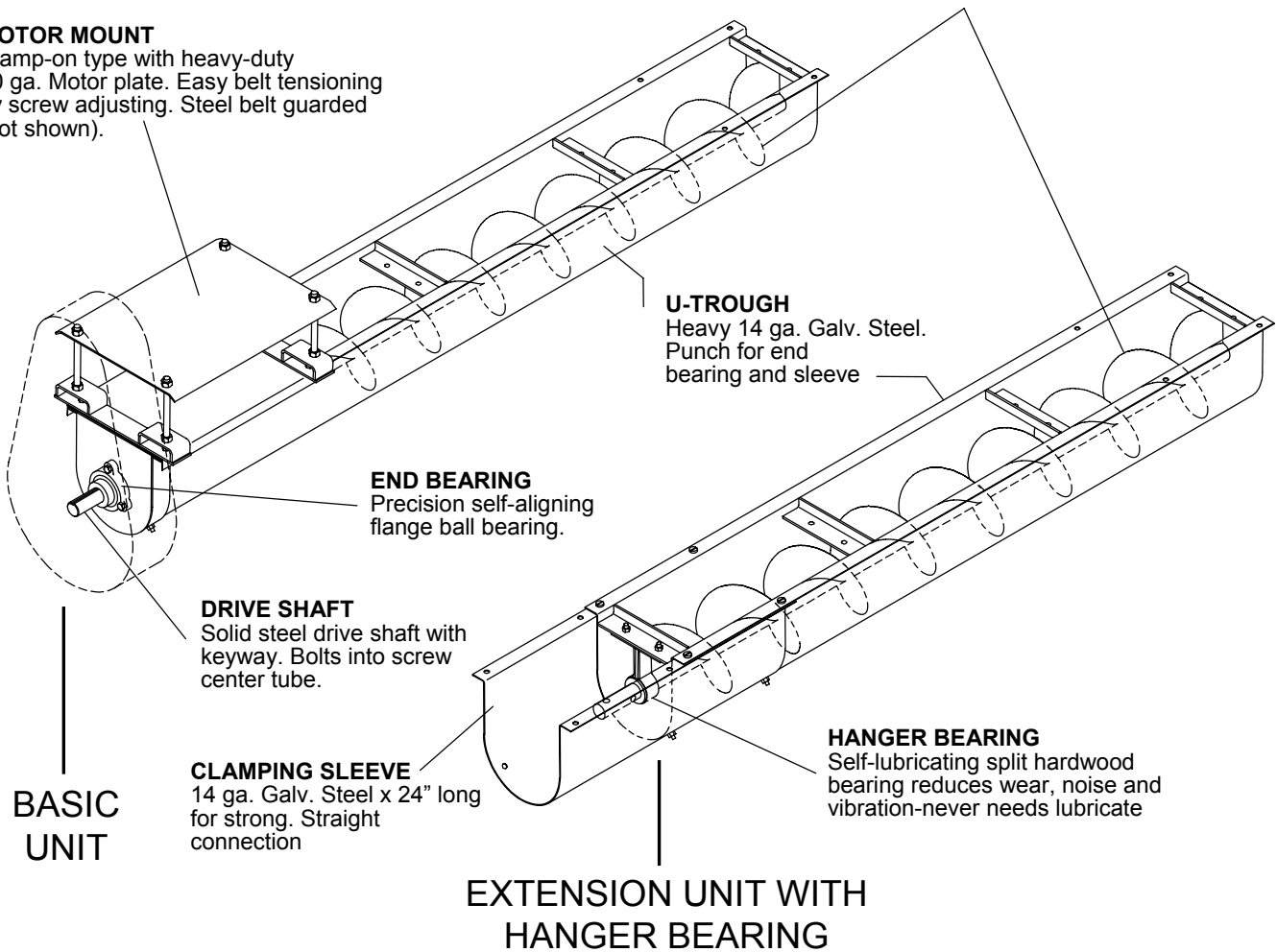
## U-TROUGH CUSTOM AUGER SYSTEM 6" - 8" - 10"

### MOTOR MOUNT

Clamp-on type with heavy-duty 10 ga. Motor plate. Easy belt tensioning by screw adjusting. Steel belt guarded (not shown).

### AUGER SCREW

7 ga. (3/16") flighting stretched and welded to 50,000 psi tension yield steel center tube. Screws are balanced for vibration-free operations.



### U-TROUGH

Heavy 14 ga. Galv. Steel. Punch for end bearing and sleeve

### END BEARING

Precision self-aligning flange ball bearing.

### DRIVE SHAFT

Solid steel drive shaft with keyway. Bolts into screw center tube.

### CLAMPING SLEEVE

14 ga. Galv. Steel x 24" long for strong. Straight connection

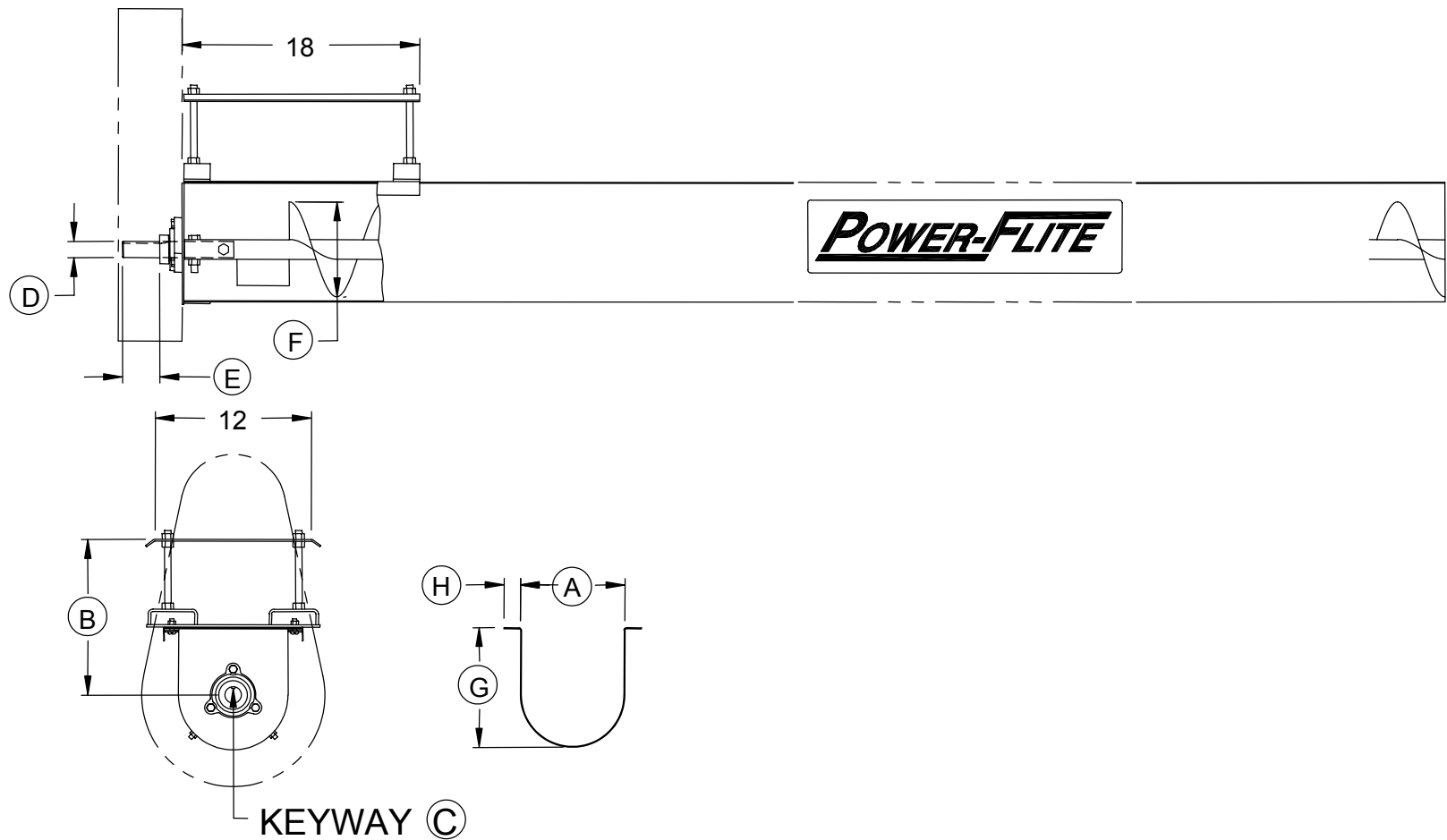
### HANGER BEARING

Self-lubricating split hardwood bearing reduces wear, noise and vibration-never needs lubricate

BASIC UNIT

EXTENSION UNIT WITH HANGER BEARING

TROUGH WIDTH	TROUGH LENGTH	BASIC UNIT			EXTENSION UNIT W/ HANGER BEARING		
		CATALOG NO.	PRICE	WEIGHT (LBS)	CATALOG NO.	PRICE	WEIGHT (LBS)
6"	5'	---		---	6UE - 5		57
	10'	6UB-1		112	6UE - 6		102
	SPEC.	6UB-4		---	6UE - 7		---
8"	5'	---		---	8UE - 5		73
	10'	8UB-1		145	8UE - 6		135
	SPEC.	8UB-4		---	8UE - 7		---
10"	5'	---		---	10UE - 5		96
	10'	10UB-1		159	10UE - 6		165
	SPEC.	10UB-4		---	10UE - 7		---



**BASIC UNIT DIMENSIONS:**

TROUGH WIDTH (A)	MOTOR MOUNT HEIGHT ADJ. (B)	DRIVE SHAFT KEYWAY (C)	DRIVE SHAFT DIA. (D)	DRIVE SHAFT LENGTH (E)	FLIGHTING DIA. (F)	TROUGH HEIGHT (G)	TROUGH FLANGE (H)
6"	6.62"-11.12"	1/4"	1"	2-3/8"	5-1/4"	7"	1-1/8"
8"	7.62"-12.12"	1/4"	1-1/4"	2-7/8"	7-1/4"	9"	1-1/4"
10"	8.62"-13.12"	3/8"	1-1/2"	2-5/8"	9-1/4"	11"	1-1/4"

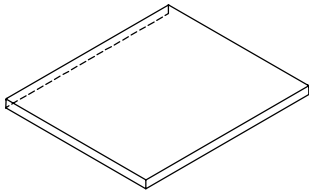
**EXTENSION W/HANGER BEARING:**



**EXTENSION UNIT DIMENSIONS:**

TUBE DIA.	CONNECTOR SHAFT DIA. (F)	SLEEVE LENGTH (G)
6"	1"	24"
8"	1-1/4"	24"
10"	1-1/2"	24"

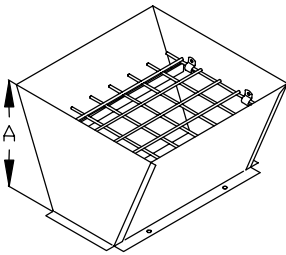
## HOPPER COVER



HOPPER		
CAT. NO.	SIZE	PRICE
202	ALL	

Fits all 18" x 18" hoppers. Hinges are included. Constructed of 14 ga. steel.

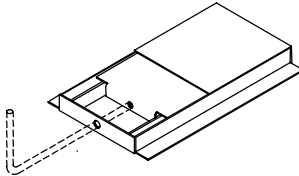
## INLET HOPPER with Intake Guard



U-TROUGH			
CAT. NO.	SIZE	A	PRICE
602	6"	12"	
802	8"	12"	
1002	10"	12"	

18" x 18" opening. Includes hinged guard. May be placed anywhere on U-trough.

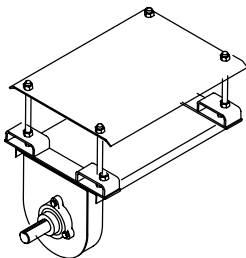
## SLIDE GATE INLET



U-TROUGH		
CAT. NO.	SIZE	PRICE
604	6"	
804	8"	
1004	10"	

Bolts on top of U-trough with grain pressure shield over slide. Control rod sold separately.

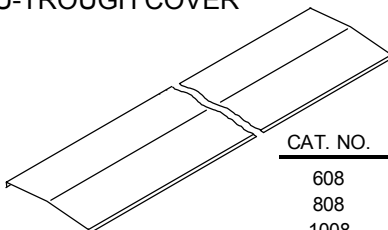
## MOTOR MOUNT KIT



U-TROUGH		
CAT. NO.	SIZE	PRICE
606	6"	
806	8"	
1006	10"	

Heavy-duty 10 ga. x 12" x 18" motor plate. 1/2" threaded rods provide easy belt adjustment. Includes flange bearing and drive shaft. Belt guard sold separately.

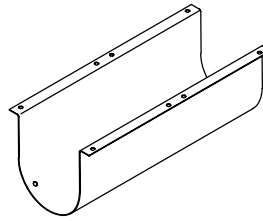
## U-TROUGH COVER



U-TROUGH		
CAT. NO.	SIZE	PRICE/FT.
608	6"	
808	8"	
1008	10"	

18 ga. galvanized steel. Snaps over U-trough flange.

## SLEEVE CONNECTOR

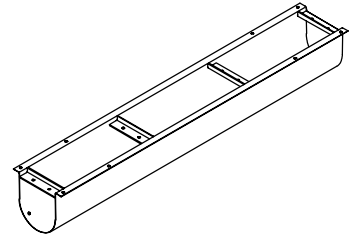


U-TROUGH		
CAT. NO.	SIZE	PRICE
610	6"	
810	8"	
1010	10"	

Heavy 14 ga. Galv. Steel x 24" long for strong, straight connection between U-trough sections.

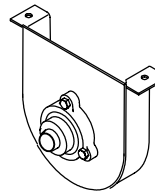
## U-TROUGH SECTIONS ONLY

U-TROUGH		
CAT. NO.	SIZE	PRICE
612	6" x 5'	
812	8" x 5'	
1012	10" x 5'	
613	6" x 10'	
813	8" x 10'	
1013	10" x 10'	



Made of 14 ga. steel. Punched for end bearing and sleeve.

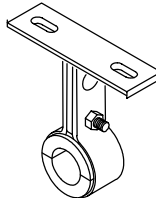
## END BEARING KIT



U-TROUGH		
CAT. NO.	SIZE	PRICE
614	6"	
814	8"	
1014	10"	

Bolts to end of U-trough. Includes flange bearing and end shaft.

## HANGER BEARING (Includes wood insert)



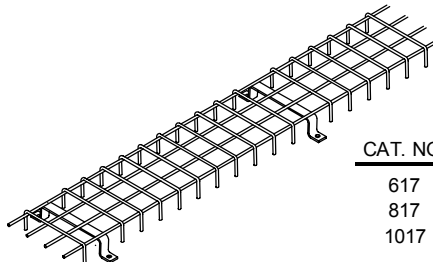
U-TROUGH		BEARING	PRICE
CAT. NO.	SIZE	I.D.	
615	6"	1"	
815	8"	1-1/4"	
1015	10"	1-1/2"	

## WOOD INSERT ONLY



U-TROUGH		BEARING	PRICE
CAT. NO.	SIZE	I.D.	
616	6"	1"	
816	8"	1-1/4"	
1016	10"	1-1/2"	

## U-TROUGH FLIGHTING GUARD



U-TROUGH		
CAT. NO.	SIZE	PRICE/FT.
617	6"	
817	8"	
1017	10"	