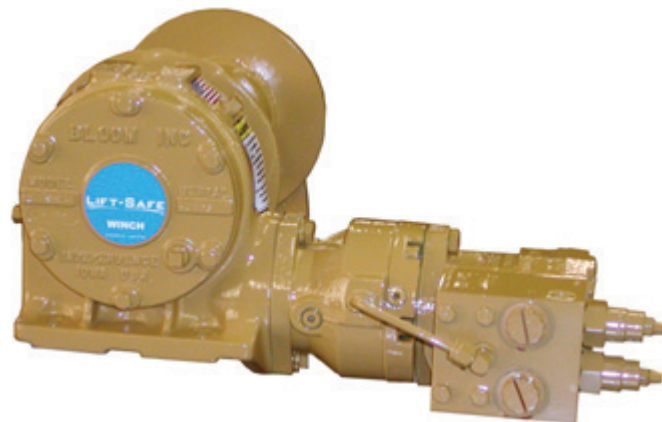


Series 800W

Hydraulic Cable Winches

Lift-Safe® hydraulic winches are specifically designed for lifting applications and optimum load control. Engineered for enhanced safety with redundant braking systems, and available in a variety of configurations. Lift-Safe® winches utilize Hydraulic Fail-Safe Brakes and Counter-Balance valves to provide both static and dynamic braking. Lift-Safe® winches offer increase operational flexibility, and superior load control in lifting applications. The 800W Series are direct drive for use in small cranes, rear load waste packers, drill rigs, fishing boats, marine craft, mining and logging operations.



**UP TO 8,000 LBS.
CAPACITY**

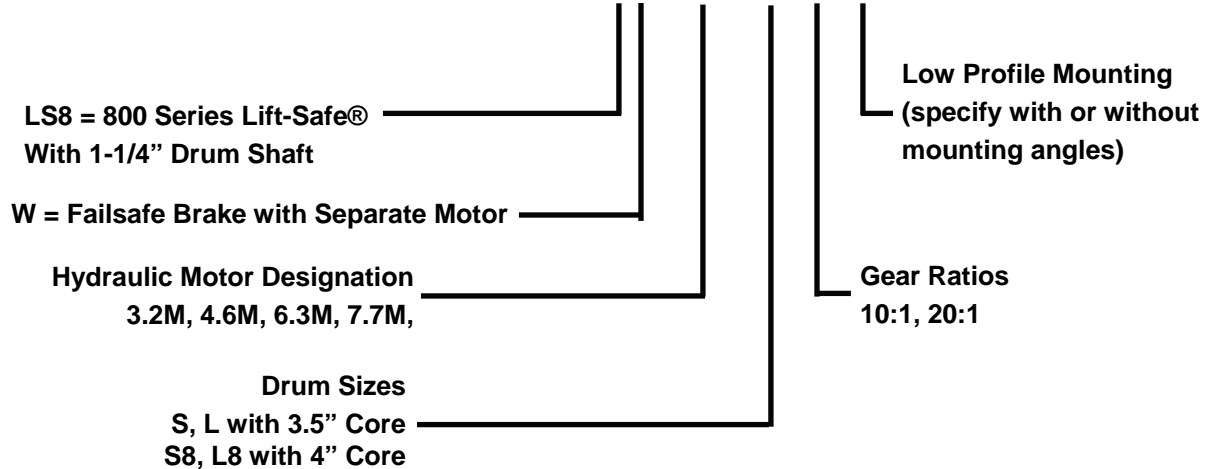
Bloom Hydraulic Cable Winches – Standard Features

- | | |
|-------------------|---|
| BRAKE | - Spring applied hydraulic release brake automatically holds load when hydraulic pressure is released. Utilizes a Double counter balance valve making it ideal for high speed Lifting and Pulling Applications. |
| GEAR CASE | - Made of high strength cast iron. Completely sealed for oil enclosed operation and to keep dirt out. |
| WORM SHAFT | - One piece alloy steel hardened and ground for extra durability. Compact design allows hydraulic motor to be coupled directly to worm. |
| WORM GEAR | - High tensile aluminum-nickel alloy bronze. Optimum lead and pressure angles transmit maximum power to the drum. |
| GEAR RATIO | - 20:1 standard, 10:1 optional ratios provide optimum efficiency in power and speed. |
| BEARINGS | - Worm gear and worm shaft run on tapered roller bearings. Outer end housing has sealed ball bearing. |
| DRUM SHAFT | - 1-1/4" diameter heat -treated alloy steel minimum tensile strength 150,000 psi. |
| CABLE DRUM | - Tough all steel construction resists breakage or warping. |



800W Series Model Selection from Performance Data

MODEL EXAMPLE: LS8W-3.2M-L8-10-LP



(LS8W) Indicates Lift-Safe® winch series 800W with 1-1/4" drum shafts.

(3.2M) Designates hydraulic motor. Motor size is determined from motor performance charts. Motors are directly coupled to spring applied hydraulic release brake.

(L8) Select drum size from chart below:

DRUM CAPACITY

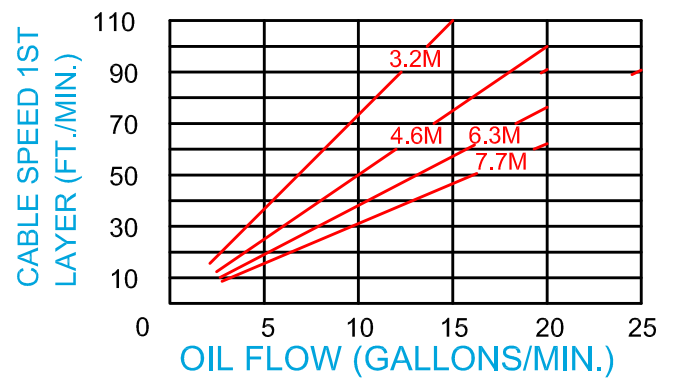
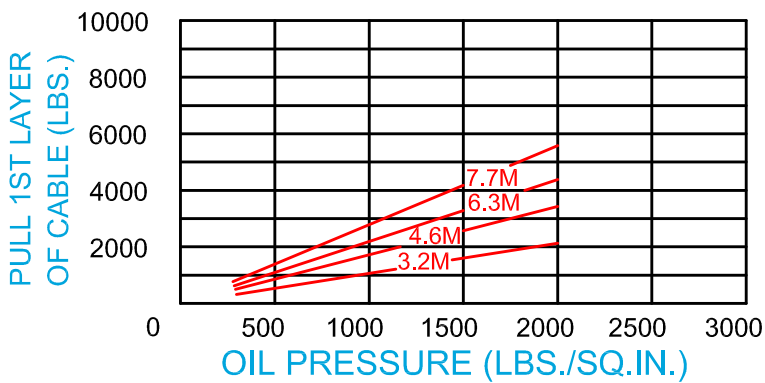
CABLE DIAMETER (IN.)	1/4	5/16	3/8	7/16	1/2
DRUM "S" CAPACITY (FT.)	120	70	45	30	25
DRUM "L" CAPACITY (FT.)	175	105	65	45	30
DRUM "S8" CAPACITY (FT.)	260	160	105	75	55
DRUM "L8" CAPACITY (FT.)	390	240	160	110	80

(10) Indicates gear ratio. 20:1 is standard. 10:1, is also available.

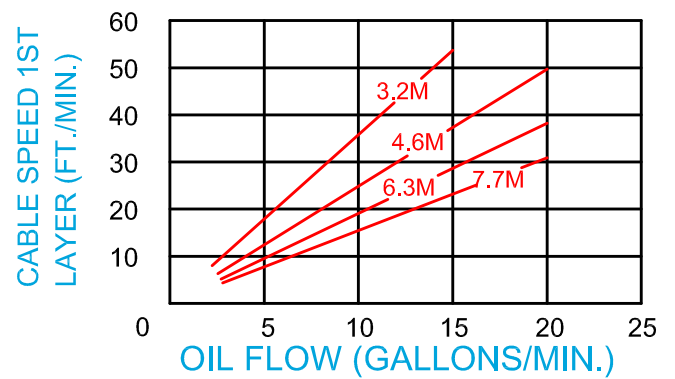
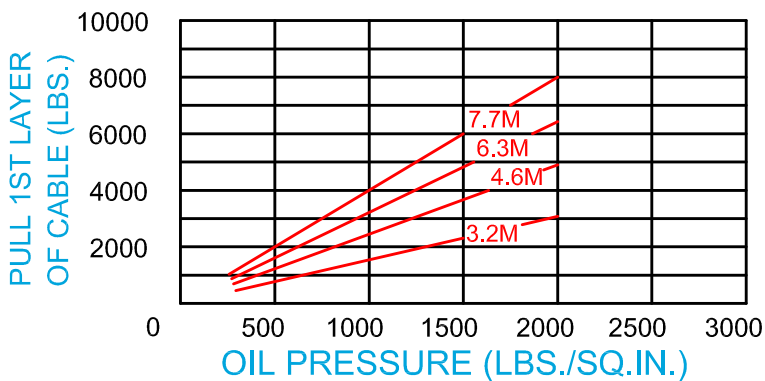
(LP) Design low profile mounting on 800W Series winches. 800W Low Profile Series winches with mounting angles are available with S, S8, L and L8 drums. However, it is necessary on all low profile whether the winch is to be supplied "with angles" or "less angles".

800W Series Model Selection from Performance Data

10:1 RATIO (optional)



20:1 RATIO (standard)



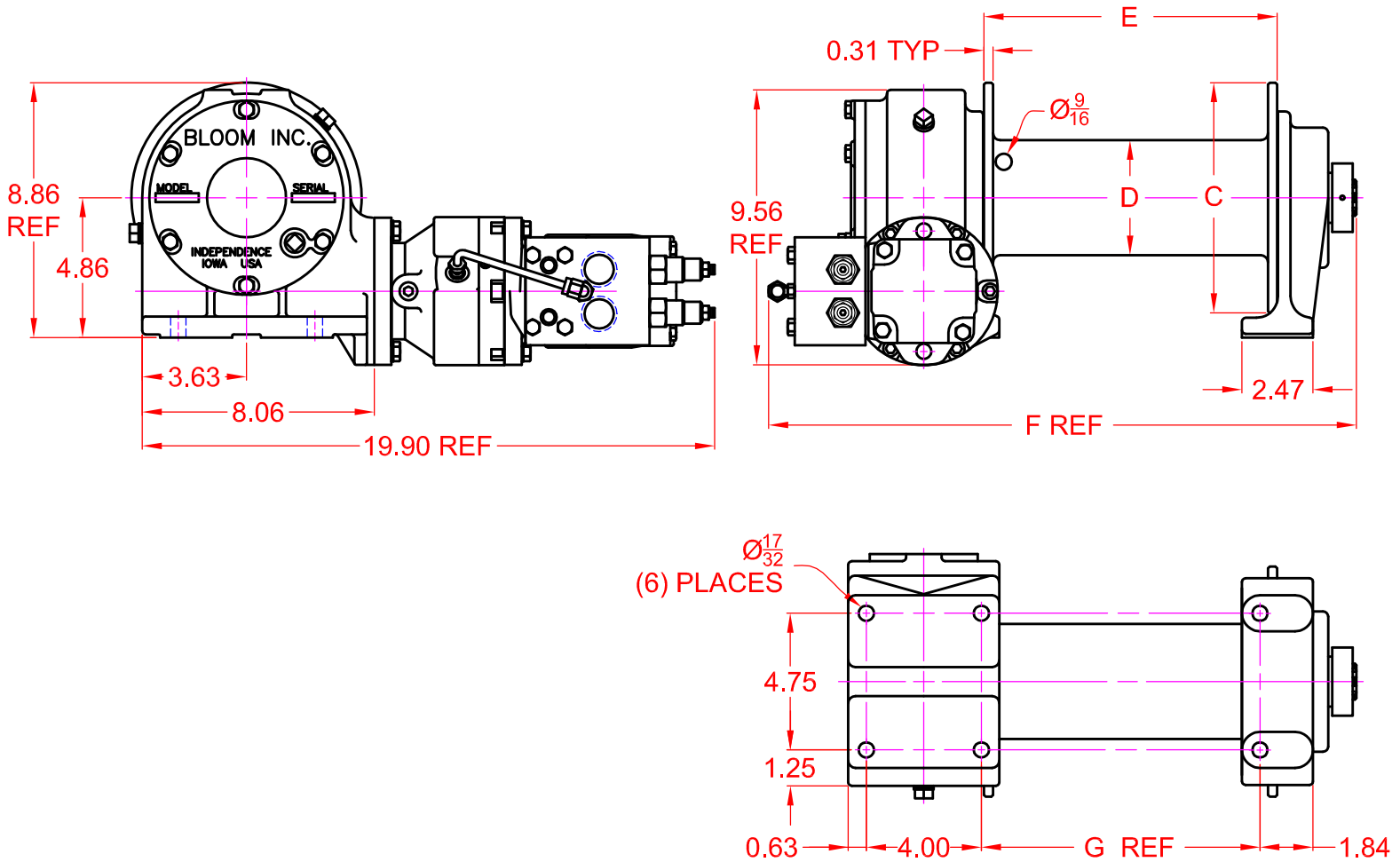


LIFT-SAFE®

"Quality Since
1910"

Dimensional Drawings

800W Series With S, S8, L and L8 Drum
Base Mount Model - Direct Drive



DRUM DESIGNATION	WINCH DIMENSION				
	C	D	E	F	G
S	6	3.50	7.19	17.43	6.69
S8	8	4	7.19	17.43	6.69
L	6	3.50	10.19	20.43	9.69
L8	8	4	10.19	20.43	9.69

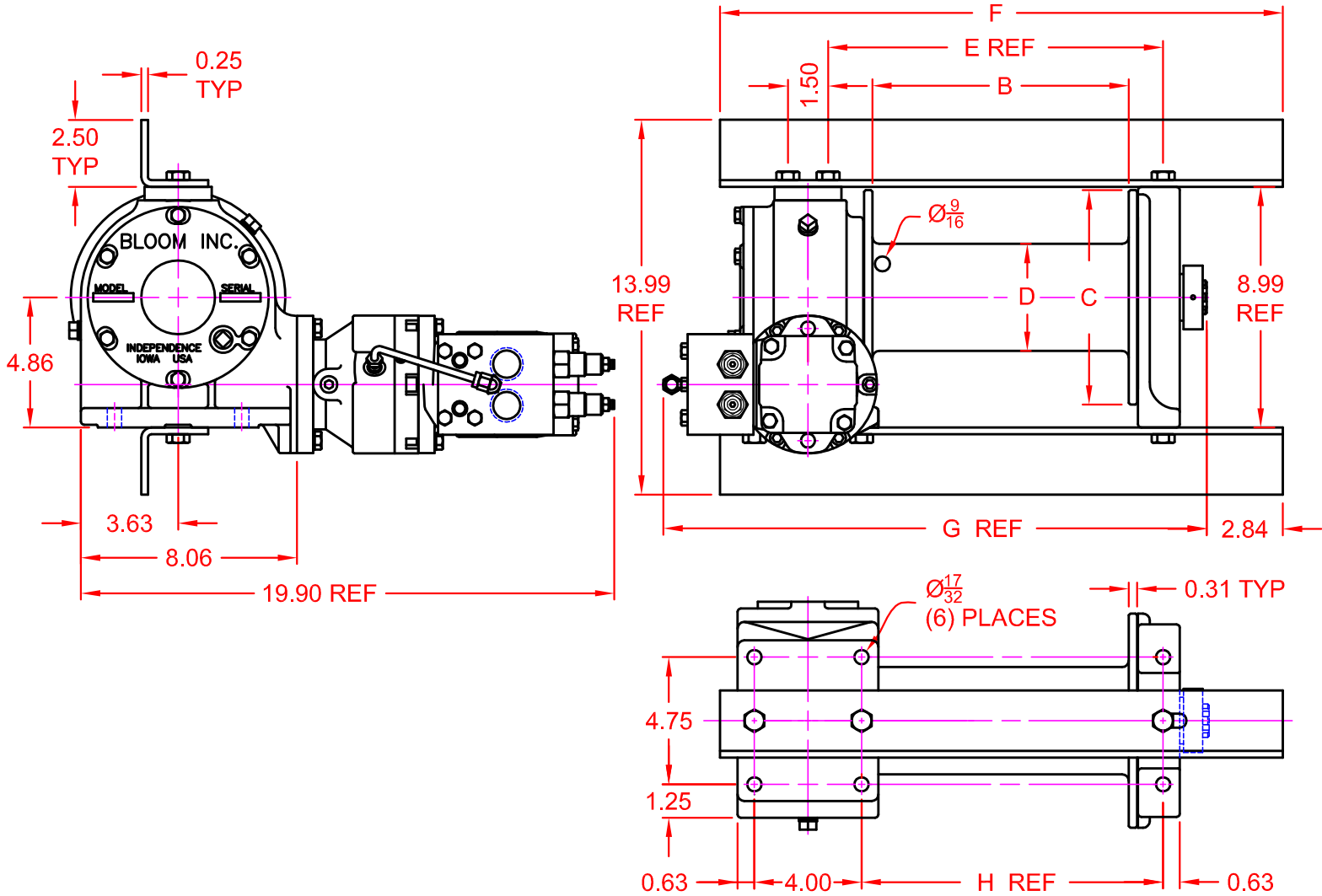


"Quality Since 1910"

LIFT-SAFE®

Dimensional Drawings

800W Series With S, S8, L and L8 Drum
Low Profile Model - Direct Drive



DRUM DESIGNATION	WINCH DIMENSION						
	(B)	(C)	(D)	(E)	(F)	(G)	(H)
S	7.19	6	3.50	9.50	18.00	17.28	8.25
S8	7.19	8	4	9.50	18.00	17.28	8.25
L	10.19	6	3.50	12.50	21.00	20.28	11.25
L8	10.19	8	4	12.50	21.00	20.28	11.25

Correct choice of Directional Control Valves for Bloom Winches

Motor Spool Valve – Work Ports are **open** to tank in neutral position

Use on all winches that use Counter Balance Valves to hold load.

Some winches may use a combination of CB Valve and Hydraulic Brake.

*Winches require ridged mounting plate.

See owner's manual for information about proper mounting plate thickness or call Bloom Sales Engineer at factory.

WARNING!

Goods are not intended for use in the moving or lifting of persons!

The winches described herein are neither designed nor intended for use or application to equipment used in the lifting or moving of persons and it is understood that all such use shall be at the sole risk of the user.

The cable clamps on winches are not designed to hold rated loads. A minimum of 5 wraps of cable must be left on drum barrel to guarantee holding of rated load.

Applications of winch where life would be endangered by any event are not recommended.



BLOOM Manufacturing Inc.

Winch Division

1443 220th Street, Independence, Iowa 50644

FAX 319-827-1140 PHONE 319-827-1139

www.bloommfg.com