

# BLOOM™ WINCH



"Quality Since  
1910"

## Series 800

### **HYDRAULIC CABLE WINCHES**

The rugged construction and versatility of the **800 Series** makes it adaptable to a wide range of applications. The **800 Series** direct drive winches are used for industrial pulling and hoisting applications including small cranes, rear load waste packers, drill rigs, fishing boats and marine craft.



**800 Series Base Mount Shown  
Low Profile Mount Available**

**UP TO 8,000 LBS.  
CAPACITY**

## **Bloom™ Hydraulic Cable Winches – Standard Features**

- |                   |   |
|-------------------|---|
| <b>GEAR CASE</b>  | - Made of high strength cast iron. Completely sealed for oil enclosed operation and to keep dirt out.             |
| <b>WORM SHAFT</b> | - One piece alloy steel hardened and ground for extra durability.   |
| <b>WORM GEAR</b>  | - High tensile aluminum-nickel alloy bronze. Optimum lead and pressure angles transmit maximum power to the drum. |
| <b>GEAR RATIO</b> | - 20:1 standard, and 10:1 optional ratios provide optimum efficiency in power and speed.                          |
| <b>BEARINGS</b>   | - Worm and drum shaft run on tapered roller bearings. Outer end housing has a sealed ball bearing.                |
| <b>DRUM SHAFT</b> | - 1-1/4" diameter heat -treated alloy steel minimum tensile strength 150,000 psi.                                 |
| <b>CABLE DRUM</b> | - Tough all steel construction resists breakage or warping.   |

### **CAUTION:**

This winch model does not include any kind of holding brake. If your application requires a holding brake choose 800H or 800W series winches with automatic hydraulic safety brakes.



[www.bloommfg.com](http://www.bloommfg.com)

# BLOOM

Manufacturing Inc.

Winch Division

**"Custom Engineered Solutions"**

**Lifting  
Pulling  
Hoisting**

Toll Free Number: 1-800-394-1139

1443 220<sup>th</sup> Street, Independence, Iowa 50644 • FAX: 319-827-1140 • PHONE: 319-827-1139

# BLOOM™ WINCH



“Quality Since  
1910”

## 800 Series Model Selection from Performance Data

MODEL EXAMPLE: 8-B-L8-20-LP

Gear Case and  
Shaft Designation

8 = 800 Series with 1-1/4" Drum Shaft

Hydraulic Motor Designation

A, B, C, DD

IS Input Shaft

Drum Sizes

S, S8, L, L8

Low Profile Mounting  
(specify with or without  
mounting angles)

Gear Ratios

10:1, 20:1

- (8) Indicates 800 Series winch with 1-1/4" drum shaft. Models with 1-1/4" shaft are available up to 8000 lbs. capacity.
- (B) Designates hydraulic motor. Motor size is determined from motor performance charts. All motors have 7/8-14 SAE O-ring ports. To order a mechanically driven winch with 1" input shaft use designation "IS".
- (L8) Select drum size from chart below:

### DRUM CAPACITY

CABLE DIAMETER (IN.)	1/4	5/16	3/8	7/16	1/2
DRUM "S" CAPACITY (FT.)	120	70	45	30	25
DRUM "S8" CAPACITY (FT.)	260	160	105	75	55
DRUM "L" CAPACITY (FT.)	175	105	65	45	30
DRUM "L8" CAPACITY (FT.)	390	240	160	110	80

- (20) Indicates gear ratio. 20:1 is standard. 10:1 is also available.
- (LP) Design low profile mounting on 800 Series winches. However, it is necessary on all low profile winches to specify whether the winch is to be supplied "with angles" or "less angles"

# BLOOM™ WINCH



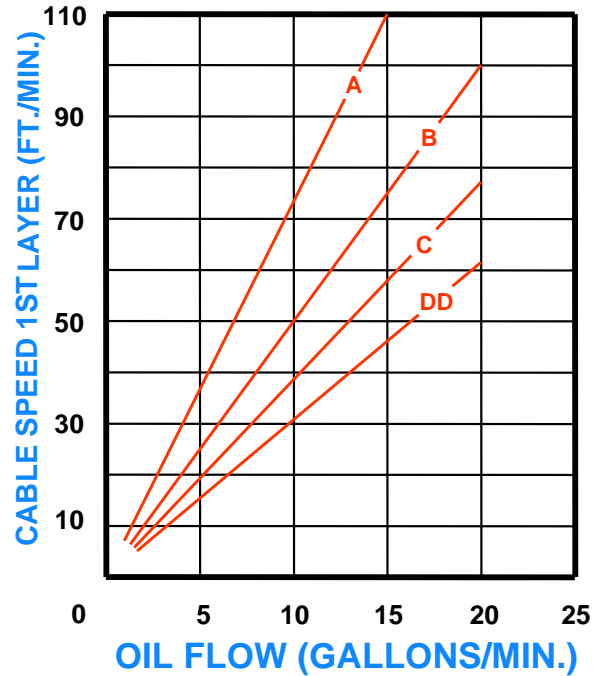
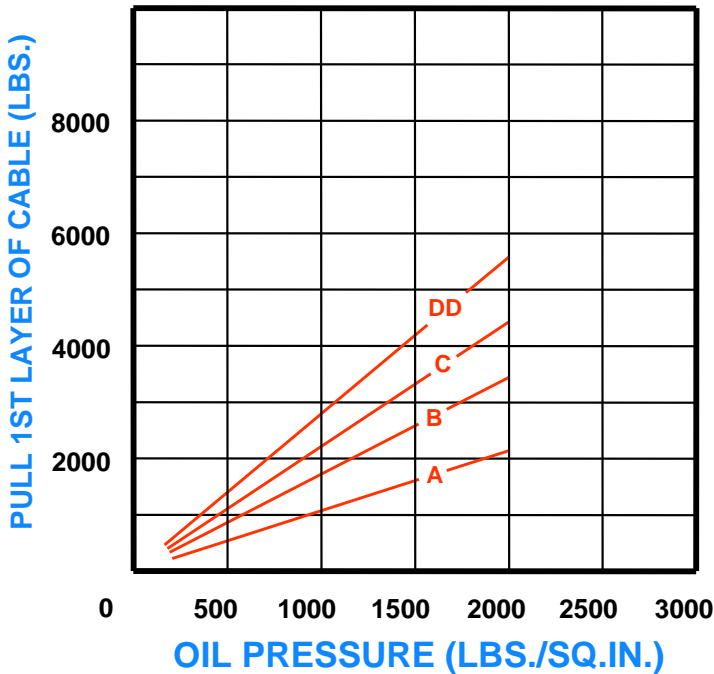
"Quality Since 1910"

## 800 Series

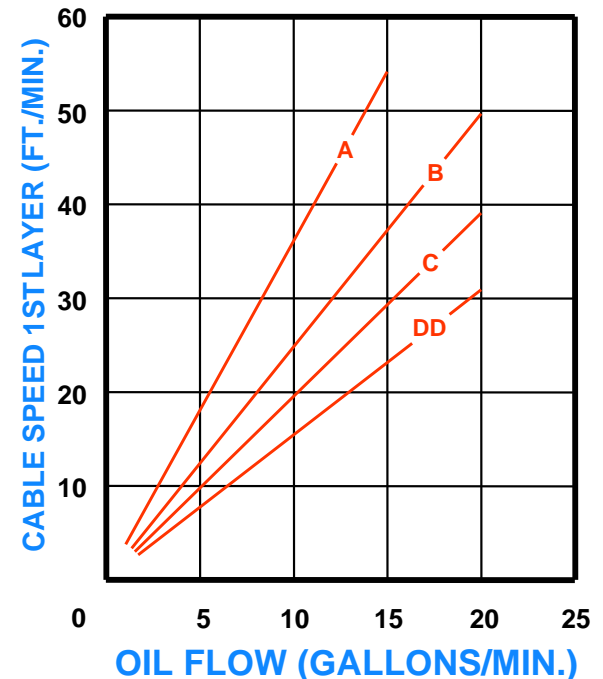
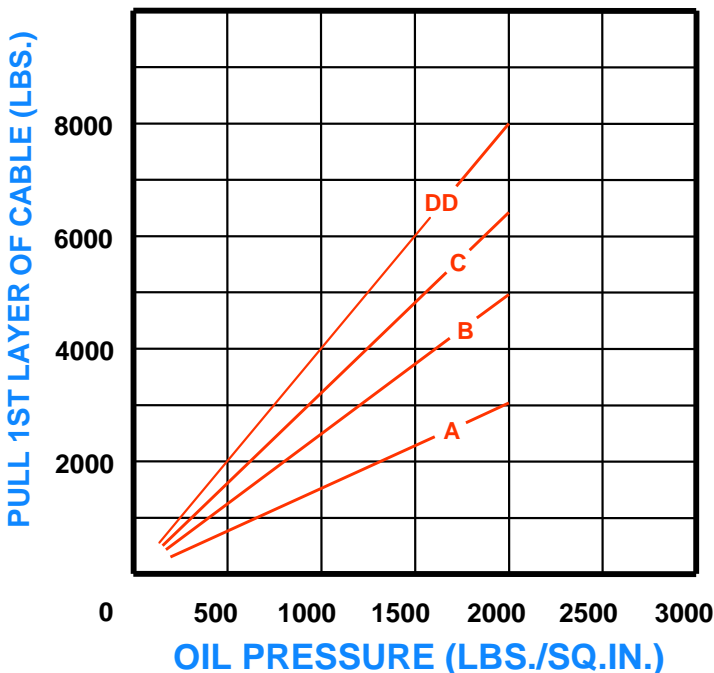
### Bloom Hydraulic Cable Winches

### Model Selection from Performance Data

10:1 RATIO (optional)



20:1 RATIO (standard)



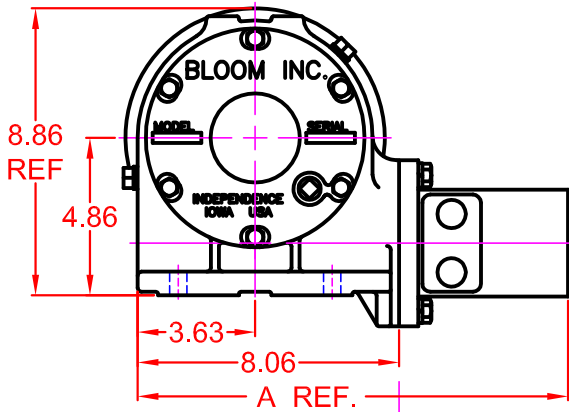


# BLOOM™ WINCH

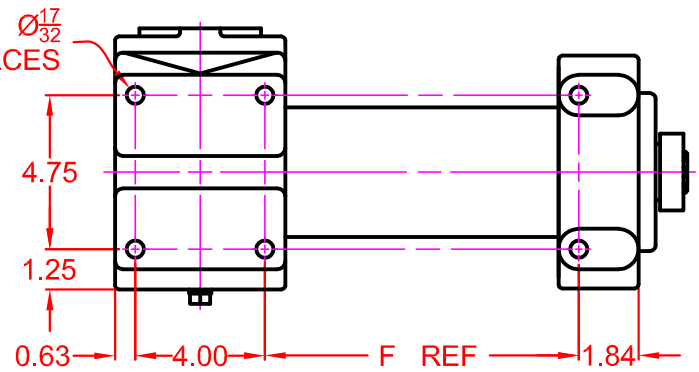
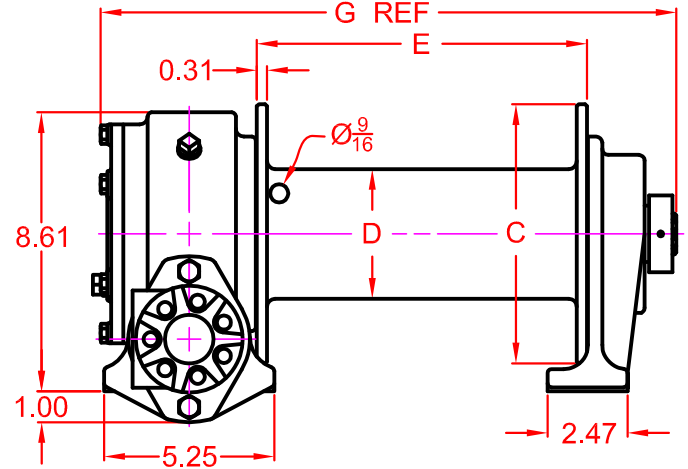
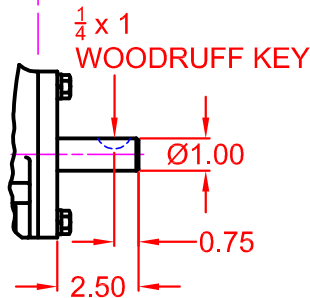
“Quality Since  
1910”

## Dimensional Drawings

800 Series With S, S8, L and L8 Drum  
Base Mount Model - Direct Drive



INPUT SHAFT MODEL



MOTOR DESIGNATION	A	B	C	DD
A DIMENSION	13.28	13.43	13.55	13.68

DESIGNATION	WINCH DIMENSION				
	C	D	E	F	G
S	6	3.50	7.19	6.69	14.50
S8	8	4	7.19	6.69	14.50
L	6	3.50	10.19	9.69	17.50
L8	8	4	10.19	9.69	17.50

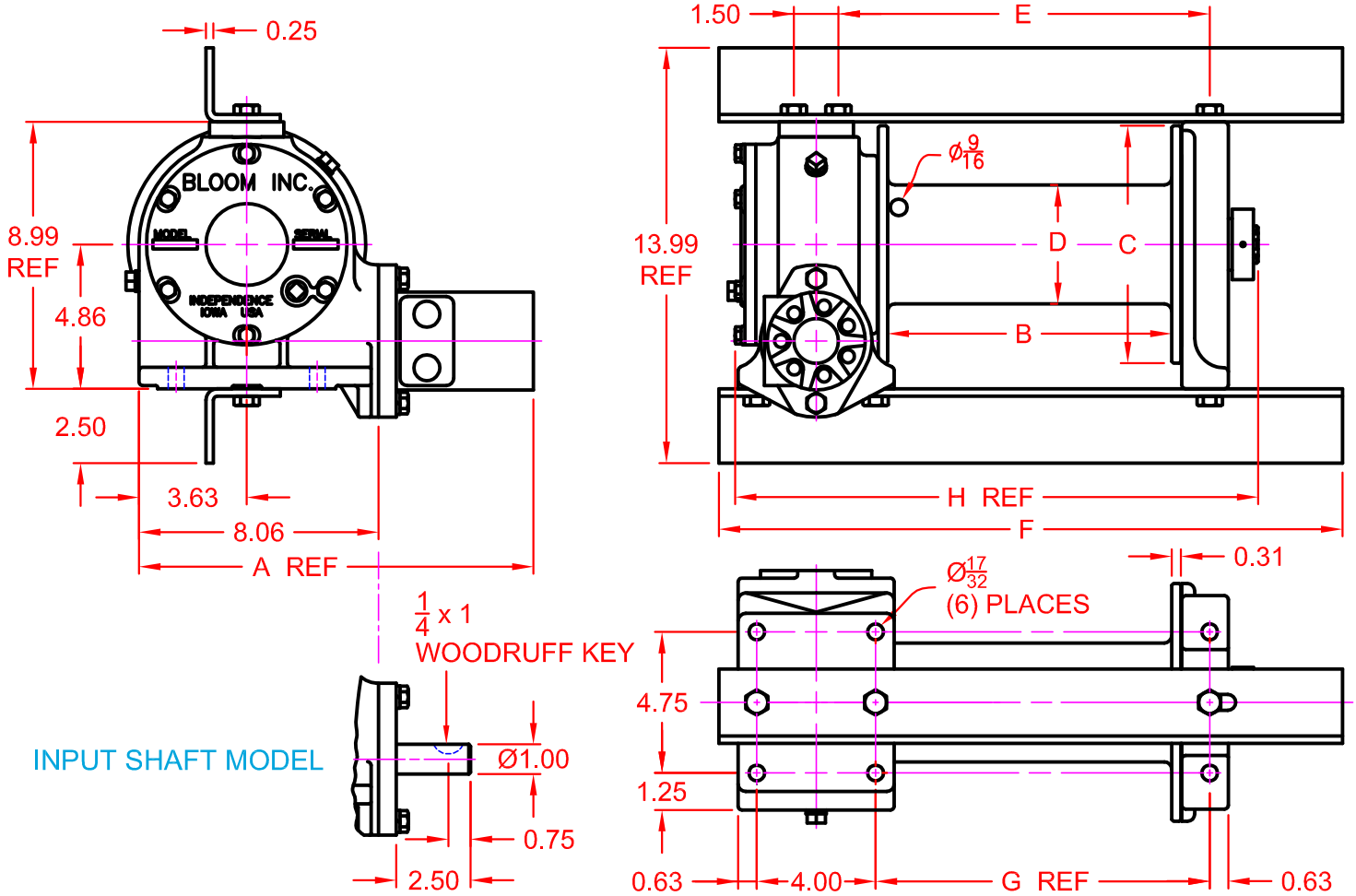


# BLOOM™ WINCH

“Quality Since  
1910”

## Dimensional Drawings

800 Series With S, S8, L and L8 Drum  
Low Profile Mount - Direct Drive



MOTOR DESIGNATION	A	B	C	DD
A DIMENSION	13.28	13.43	13.55	13.68

DRUM DESIGNATION	WINCH DIMENSION						
	B	C	D	E	F	G	H
S	7.19	6	3.50	9.50	18.00	8.25	14.50
S8	7.19	8	4	9.50	18.00	8.25	14.50
L	10.19	6	3.50	12.50	21.00	11.25	17.50
L8	10.19	8	4	12.50	21.00	11.25	17.50

# BLOOM™ WINCH

## Correct choice of Directional Control Valves for Bloom Winches

**Tandem Center Spool Valve** – Work Ports are **blocked** in neutral position

Use on all winches that use motor only to hold load.

\*Winches require ridged mounting plate.  
See owner's manual for information about proper mounting plate thickness or call Bloom Sales Engineer at factory

### WARNING!

Goods are not intended for use in the moving or lifting of persons!

The winches described herein are neither designed nor intended for use or application to equipment used in the lifting or moving of persons and it is understood that all such use shall be at the sole risk of the user.

The cable clamps on winches are not designed to hold rated loads. A minimum of 5 wraps of cable must be left on drum barrel to guarantee holding of rated load.

Applications of winch where life would be endangered by any event are not recommended.



## **BLOOM Manufacturing Inc.** Winch Division

1443 220<sup>th</sup> Street,, Independence, Iowa 50644

FAX 319-827-1140 PHONE 319-827-1139

[www.bloommfg.com](http://www.bloommfg.com)

©Copyright 2010 Bloom Mfg. Inc