

# BLOOM™ WINCH

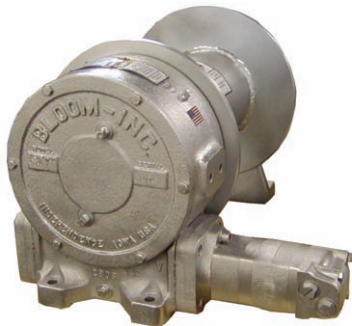


*"Quality Since  
1910"*

## Series 1600

### **HYDRAULIC CABLE WINCHES**

The rugged construction and versatility of the **1600 Series** makes it adaptable to a wide range of applications. **1600 Series** direct drive winches are used for lifting or pulling applications such as construction lifting equipment, fishing, other marine craft and cranes.



1600 Series Galvanized Model Shown  
Standard Finish is Painted  
Low Profile or Base Mount Available

**Up To 20,000 LBS.  
CAPACITY**

## **Bloom™ Hydraulic Cable Winches – Standard Features**

- |                   |  |
|-------------------|--|
| <b>GEAR CASE</b>  | - Made of high strength cast iron. Completely sealed for oil enclosed operation and to keep dirt out.  |
| <b>WORM SHAFT</b> | - One piece alloy steel hardened and ground for extra durability. Seal on worm allows motor to be removed without draining oil.                          |
| <b>WORM GEAR</b>  | - High tensile aluminum-nickel alloy bronze cast on high strength ductile iron hub. Optimum lead and pressure angles transmit maximum power to the drum. |
| <b>GEAR RATIO</b> | - 25:1 standard & 12.5:1 optional ratios provide optimum efficiency in power and speed.  |
| <b>BEARINGS</b>   | - Worm gear and worm shaft run on tapered roller bearings. Outer end housing has a grease zerk for lubricating the bronze bushing.                       |
| <b>DRUM SHAFT</b> | - 2-1/4" diameter heat -treated alloy steel minimum tensile strength 150,000 psi.  |
| <b>CABLE DRUM</b> | - Tough all steel construction resists breakage or warping.  |

**CAUTION:**

This winch model does not include any kind of holding brake. If your application requires a holding brake choose 1600K series winches with hydraulic fail-safe brakes.



[www.bloommfg.com](http://www.bloommfg.com)

# BLOOM

Manufacturing Inc.

Winch Division

**"Custom Engineered Solutions"**

*Lifting  
Pulling  
Hoisting*

Toll Free Number: 1-800-394-1139

1443 220<sup>th</sup> Street,, Independence, Iowa 50644 • FAX: 319-827-1140 • PHONE: 319-827-1139

# BLOOM™ WINCH

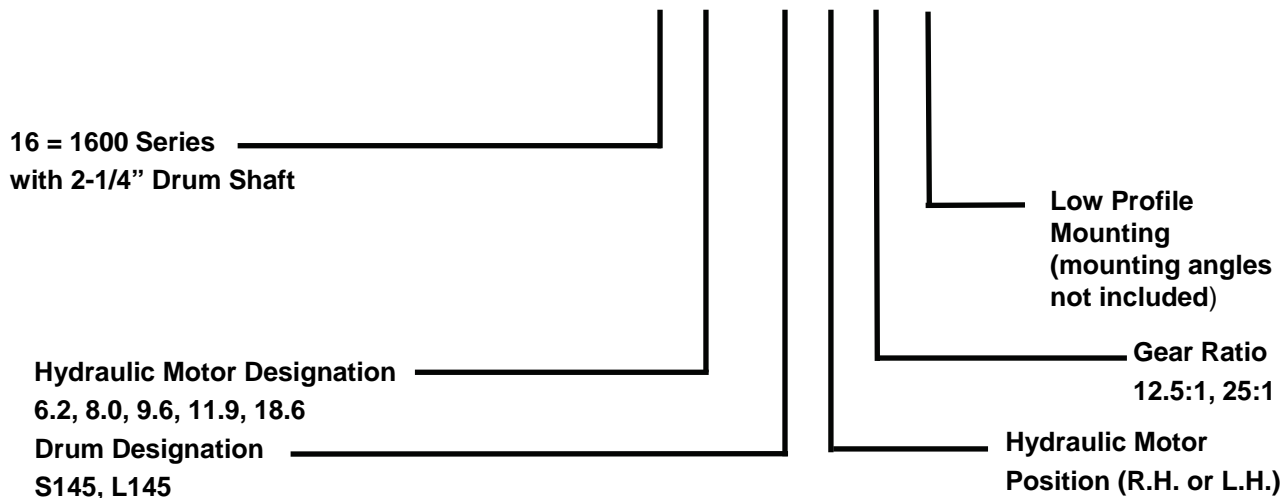


## 1600 Series

### Model Selection from Performance Data

"Quality Since 1910"

MODEL EXAMPLE: 16-6.2-L14-RH-25-LP



(16) Indicates a 1600 Series winch with 2 1/4" drum shaft.

(6.2) Designates hydraulic motor used. To select proper motor size, use performance data chart.

(L145) Drum designation.

## DRUM CAPACITY

CABLE DIAMETER (IN.)	5/16	3/8	7/16	1/2	9/16	5/8
DRUM "S145" CAPACITY (FT.)	674	465	305	234	170	126
DRUM "L145" CAPACITY (FT.)	1214	842	662	425	318	303

(RH) Hydraulic motor may be placed on either side of the gear case. Specify right hand (RH) or left hand (LH) as viewed looking at gear case cover. Right hand is standard.

(25) Indicates gear ratio. 25:1 is standard. ( 12.5:1 Optional )

(LP) Designates low profile mounting. It is necessary on all low profile whether the winch is to be supplied "with angles" or "less angles".

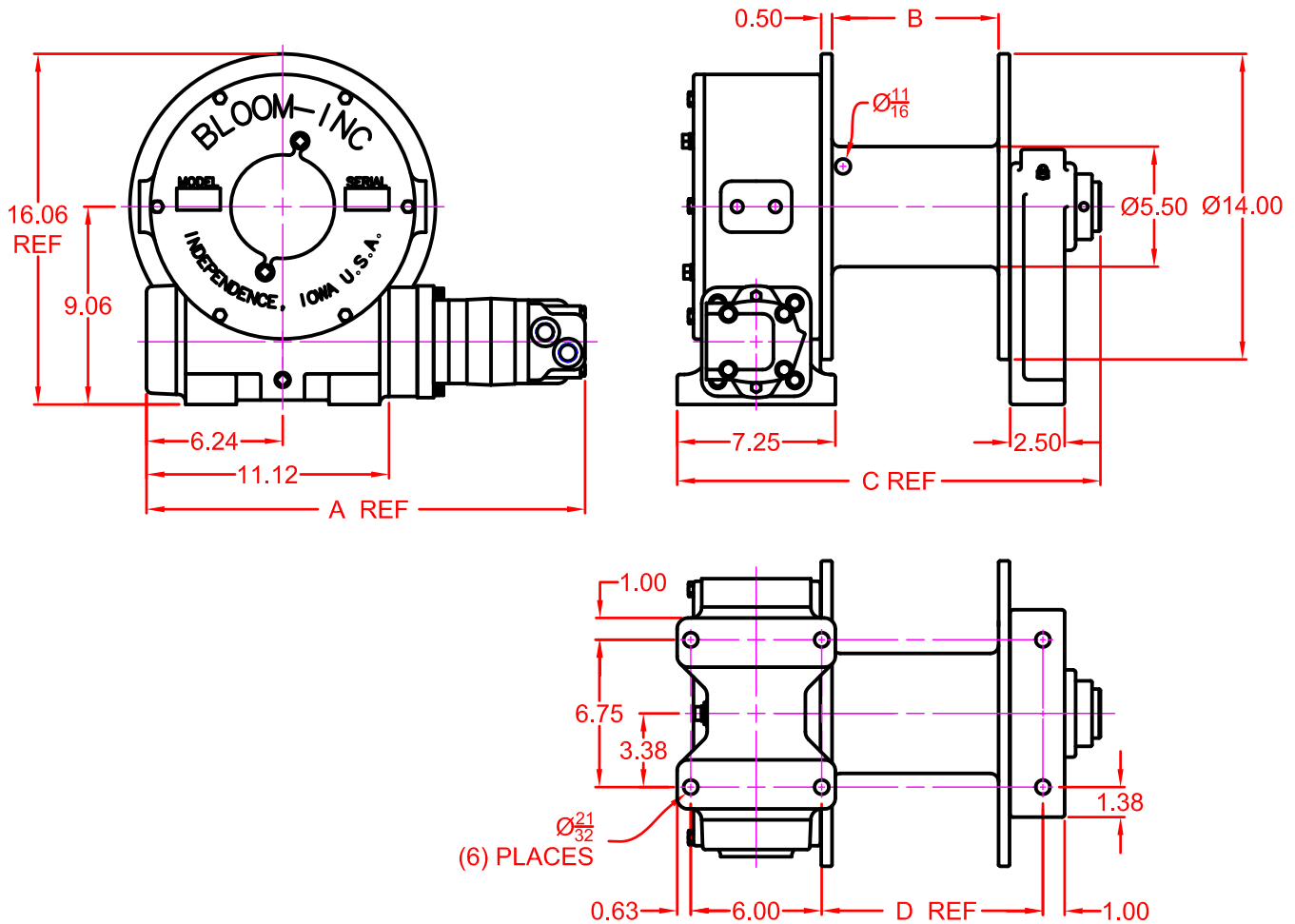


# BLOOM™ WINCH

## Dimensional Drawings

“Quality Since  
1910”

Series 1600 With S145 & L145 Drums  
Base Mount Model - Direct Drive



MOTOR DESIGNATION	6.2	9.6	11.9	18.6
A DIMENSION	19.86	20.11	20.38	21.18

DRUM DESIGNATION	B	C	D
S145	7.63	19.40	10.14
L145	13.63	25.40	16.14

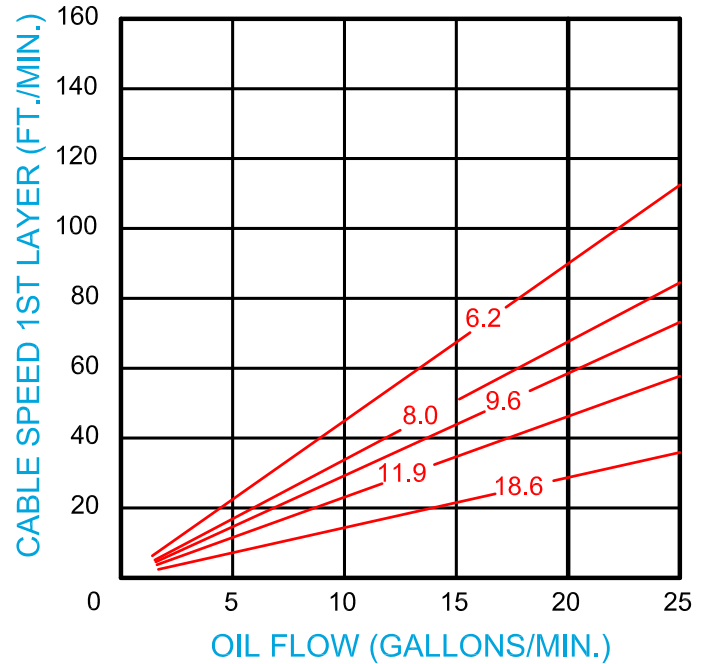
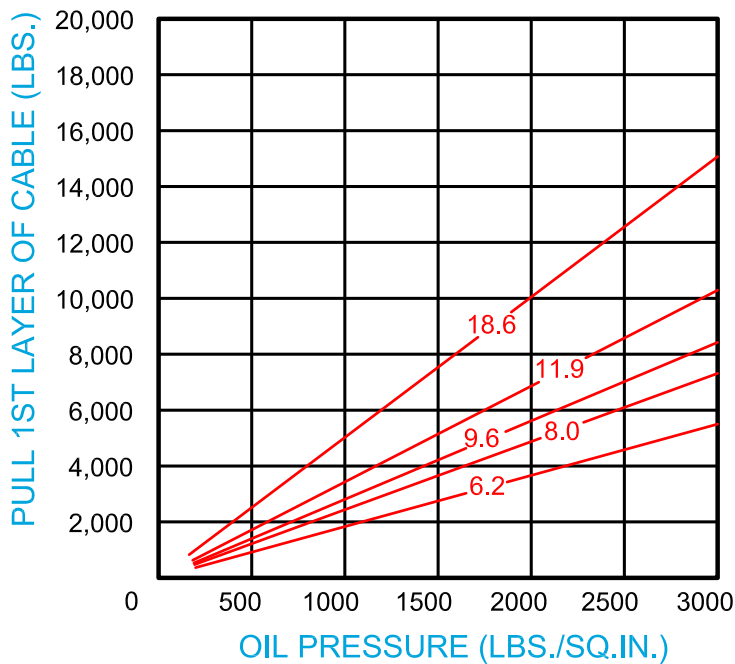
CABLE DIAMETER (IN.)	5/16	3/8	7/16	1/2	9/16	5/8
DRUM "S145" CAPACITY (FT.)	674	465	305	234	170	126
DRUM "L145" CAPACITY (FT.)	1214	842	662	425	318	303

# BLOOM™ WINCH

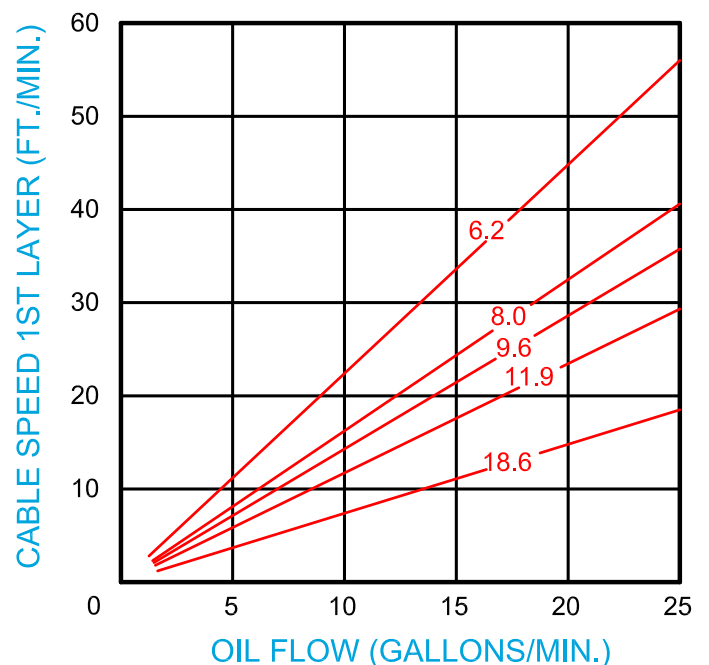
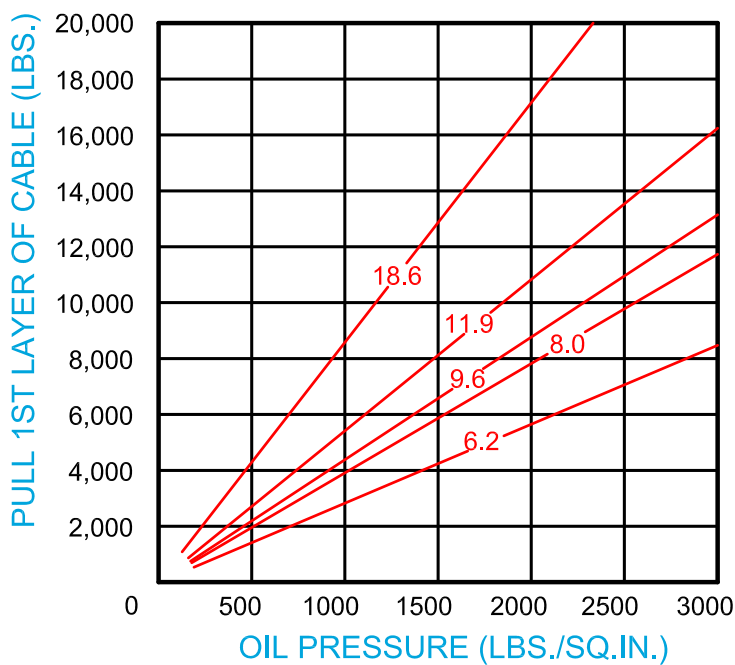
## Series 1600

### Bloom Hydraulic Cable Winches Model Selection from Performance Data

12.5:1 RATIO (optional)



25:1 RATIO (standard)



# BLOOM™ WINCH

## Correct choice of Directional Control Valves for Bloom Winches

**Tandem Center Spool Valve** – Work Ports are **blocked** in neutral position

Use on all winches that use motor only to hold load.

\*Winches require ridged mounting plate.  
See owner's manual for information about proper mounting plate thickness or call Bloom Sales Engineer at factory

### **WARNING!**

Goods are not intended for use in the moving or lifting of persons!

The winches described herein are neither designed nor intended for use or application to equipment used in the lifting or moving of persons and it is understood that all such use shall be at the sole risk of the user.

The cable clamps on winches are not designed to hold rated loads. A minimum of 5 wraps of cable must be left on drum barrel to guarantee holding of rated load.

Applications of winch where life would be endangered by any event are not recommended.



## **BLOOM Manufacturing Inc.**

### **Winch Division**

1443 220<sup>th</sup> Street, Independence, Iowa 50644

FAX 319-827-1140 PHONE 319-827-1139

[www.bloommfg.com](http://www.bloommfg.com)

©Copyright 2010 Bloom Mfg. Inc.